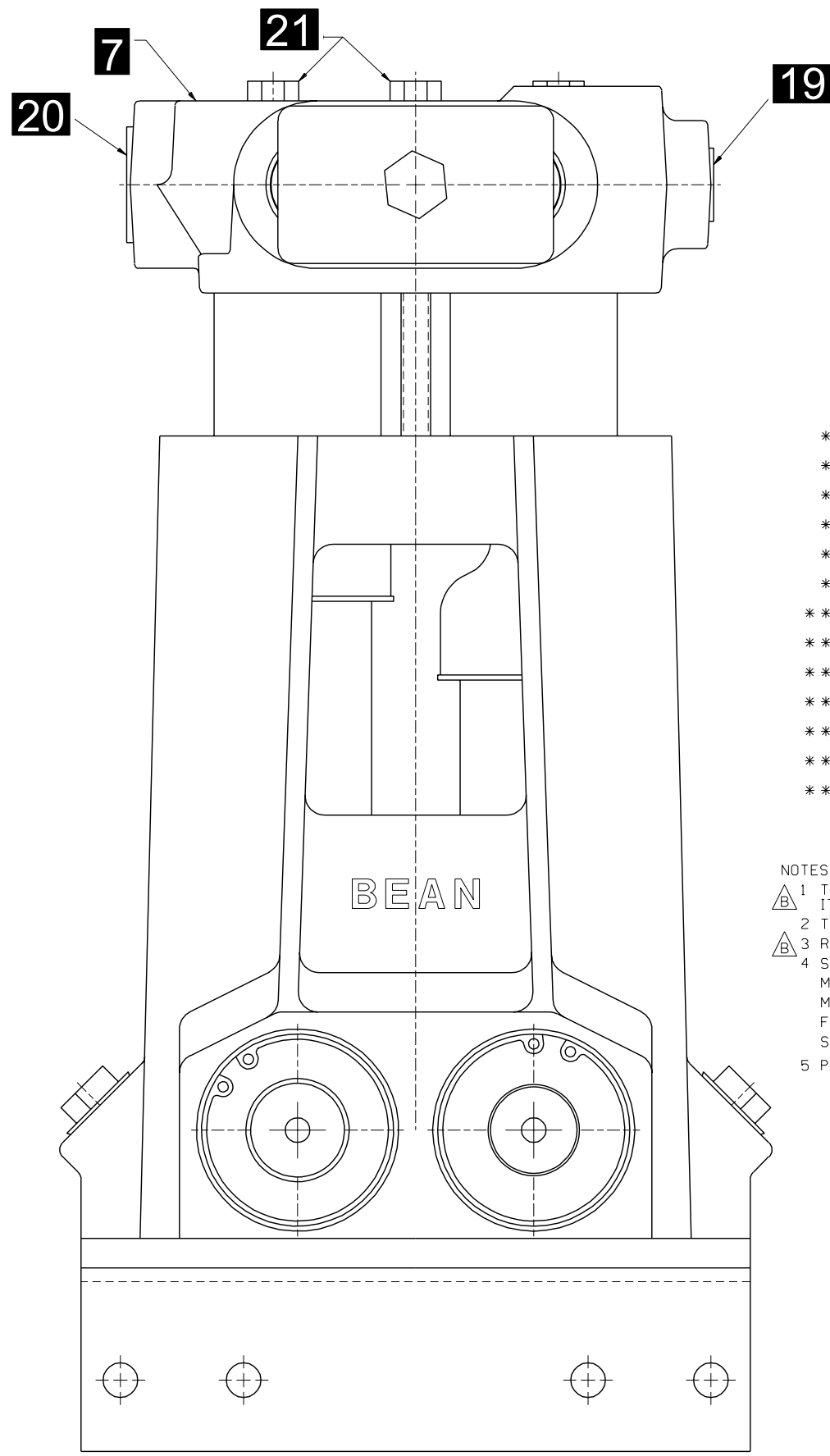
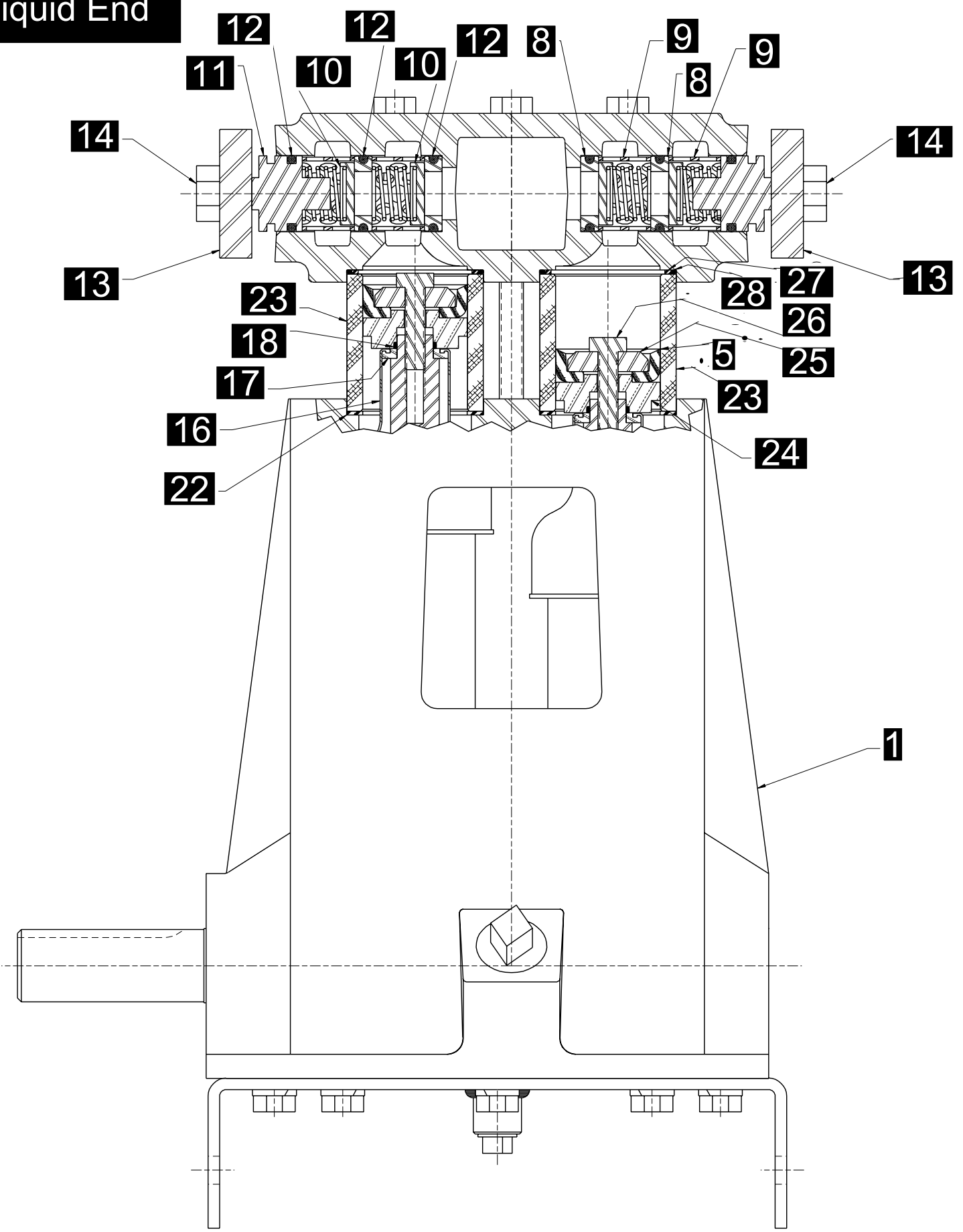


E0410-HD Liquid End



* THESE COMPONENTS ARE LOCATED IN THE FLUID CYLINDER GROUP, ITEM ②
 ** THESE COMPONENTS ARE LOCATED IN THE ATTACHING GROUP, ITEM ③
 *** THESE COMPONENTS ARE LOCATED IN THE CYLINDER GROUP, ITEM ④

ITEM	NO. RECD	PART NO.	PART NAME
①	1	P510889	POWER END: HEAVY DUTY
②	1	5260309	FLUID CYLINDER GROUP:
③	1	5273638	ATTACHING GROUP:
④	2	5273635	CYLINDER GROUP:
⑤	4	3267699	CUP: 1/4" DIA, HSN W/EMERALITE COATING
⑥	1	5266225	LIT KIT:
* ⑦	1	5256139	FLUID CYLINDER: NITRIDED
* ⑧	8	5260142	VALVE SEAT: 450 SST
* ⑨	8	1219610	CAGE: 302 SST
* ⑩	8	5253499	DISC & SPRING ASSEMBLY: 450 SST
* ⑪	4	1219614	VALVE COVER:
* ⑫	12	1177394	O-RING: 1 3/16" OD X 1/8" NOM., BUNA-N
* ⑬	2	1255887	VALVE COVER CLAMP:
* ⑭	2	1100064	HEX HD CAP SCREW: 1/2-13 X 1 1/2" LG.
* ⑮	1	1109987	PLUG: 1/4" PIPE (NOT SHOWN)
** ⑯	4	1279148	UMBRELLA: BLACK
** ⑰	4	1269388	UMBRELLA WASHER:
** ⑱	4	1101339	O-RING: 1 1/16" OD X 1/16" NOM., BUNA-N
** ⑲	1	1177200	CAPLUG: INT. 12
** ⑳	1	1177202	CAPLUG: INT. 17S
** ㉑	4	1101262	HEX HD CAP SCREW: 3/8-16 X 5" LG.
*** ㉒	4	A91684	CYLINDER GASKET:
*** ㉓	4	1279920	CERAMIC CYLINDER: 1.25 DIA
*** ㉔	4	1282635	PACKING HOLDER:
*** ㉕	4	5257216	PACKING WASHER:
*** ㉖	4	1284516	HEX HD CAP SCREW: 5/16-18 X 1 1/2" LG.
*** ㉗	4	1285170	SEAL RING:
*** ㉘	4	1177841	O-RING: 2 1/8" OD X 1/16" NOM., BUNA-N

NOTES:
 ⚠ 1 TORQUE ITEM 21 TO 55 FT-LBS; ITEM 14 TO 35 FT-LBS
 ITEM 26 TO 10 FT-LBS
 2 TEST AT 500 RPM, 1500 PSI
 ⚠ 3 RETORQUE ITEM 21 AFTER TEST
 4 STAMP NAMEPLATE WITH THE FOLLOWING DATA:
 MODEL NO. - E0410 HD PART NO. - P510899
 MAX RPM. - 700 POWER - 14.6 HP / 10.9 KW
 FLOW - 15 GPM/56 LPM MAX PRESSURE - 1500 PSI/10340 KPA
 SERIAL NO. -
 5 PAINT PER ENGR SPEC CP-20

This drawing is the property of FMC Corporation and may not be used, reproduced, published, or disclosed to others without express authorization FMC Corp.		FMC Corporation Fluid Control Division 2825 W. Washington Box 1377 Stephenville, Texas 76481	
Unless Otherwise Specified: Remove all burrs & sharp corners .005 R. All diameters concentric unless .001 I.D.		PUMP ASSEMBLY E0410 HD, W/1/4" NPT X 3/4" NPT FLUID END, HSN CUPS, SST DISC VALVE ASSEMBLIES	
B REV NOTES A NEW ISSUE REV WAS	SJK 07-19-00 SJK 03-16-00 ECN BY DATE	RELEASED FOR PRODUCTION ECN DATE 5004427 03-29-00	SCALE: NONE DRAWN: SJK 03-16-00 CKD: BKM 03-20-00 APPD: RMc 03-28-00 SIZE: D DRAWING NO. P510899

P510899

E0410-HD Liquid End

ITEM	NO. REQD	PART NO.	PART NAME
①	1	P510889	POWER END: HEAVY DUTY
②	1	5260309	FLUID CYLINDER GROUP:
③	1	5273638	ATTACHING GROUP:
④	2	5273635	CYLINDER GROUP:
⑤	4	3267699	CUP: 1¼" DIA, HSN W/EMERALITE COATING
⑥	1	5266225	LIT KIT:
* ⑦	1	5256139	FLUID CYLINDER: NITRIDED
* ⑧	8	5260142	VALVE SEAT: 450 SST
* ⑨	8	1219610	CAGE: 302 SST
* ⑩	8	5253499	DISC & SPRING ASSEMBLY: 450 SST
* ⑪	4	1219614	VALVE COVER:
* ⑫	12	1177394	O-RING: 1¾" OD X ⅛" NOM., BUNA-N
* ⑬	2	1255887	VALVE COVER CLAMP:
* ⑭	2	1100064	HEX HD CAP SCREW: ½-13 X 1½" LG.
* ⑮	1	1109987	PLUG: ¼" PIPE (NOT SHOWN)
** ⑯	4	1279148	UMBRELLA: BLACK
** ⑰	4	1269388	UMBRELLA WASHER:
** ⑱	4	1101339	O-RING: 1½" OD X ⅛" NOM., BUNA-N
** ⑲	1	1177200	CAPLUG: INT. 12
** ⑳	1	1177202	CAPLUG: INT. 17S
** ㉑	4	1101262	HEX HD CAP SCREW: ⅜-16 X 5" LG.
*** ㉒	4	A91684	CYLINDER GASKET:
*** ㉓	4	1279920	CERAMIC CYLINDER: 1.25 DIA
*** ㉔	4	1282635	PACKING HOLDER:
*** ㉕	4	5257216	PACKING WASHER:
*** ㉖	4	1284516	HEX HD CAP SCREW: ⅝-18 X 1½" LG.
*** ㉗	4	1285170	SEAL RING:
*** ㉘	4	1177841	O-RING: 2½" OD X ⅛" NOM., BUNA-N

NOTES:

△ 1 TORQUE ITEM 21 TO 55 FT-LBS; ITEM 14 TO 35 FT-LBS
ITEM 26 TO 10 FT-LBS

2 TEST AT 500 RPM, 1500 PSI

△ 3 RETORQUE ITEM 21 AFTER TEST

4 STAMP NAMEPLATE WITH THE FOLLOWING DATA:

MODEL NO. - E0410 HD

PART NO. - P510899

MAX RPM. - 700

POWER - 14.6 HP / 10.9 KW

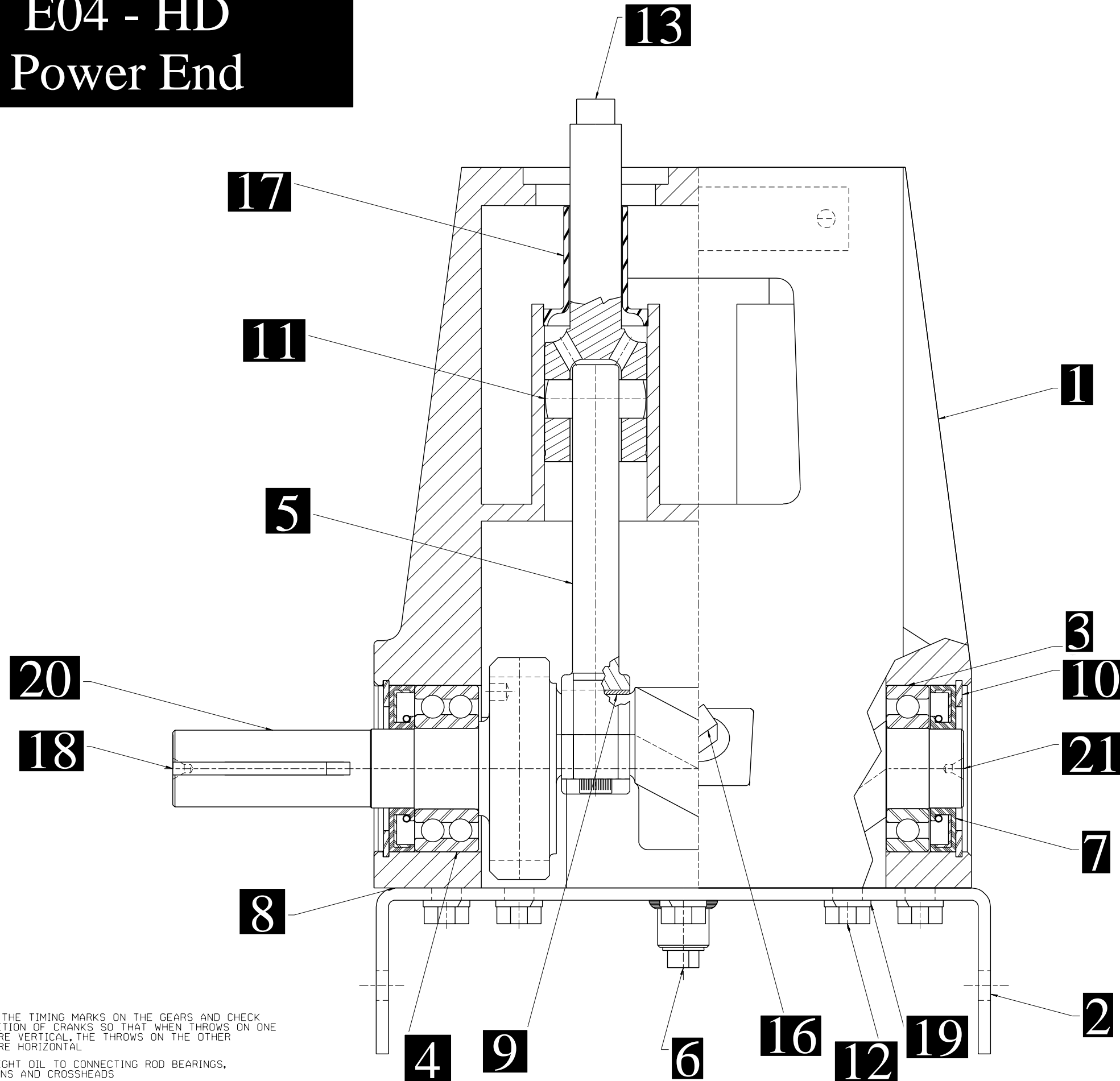
FLOW - 15 GPM/56 LPM

MAX PRESSURE - 1500 PSI/10340 KPA

SERIAL NO. -

5 PAINT PER ENGR SPEC CP-20

E04 - HD Power End



ITEM	NO. RECD	PART NO.	PART NAME
①	1	1273545	POWER FRAME:
②	1	1280633	MOUNTING BASE:
③	3	1104444	BALL BEARING: SINGLE
④	1	1104508	BALL BEARING: DOUBLE
⑤	4	P509546	CONNECTING ROD:
⑥	1	1101305	PLUG: 1/4" PIPE
⑦	4	1101095	OIL SEAL:
⑧	1	1273559	GASKET:
⑨	8	P510431	ROD BEARING:
⑩	4	1118553	RETAINER RING:
⑪	4	1219650	WRIST PIN:
⑫	12	1100068	HEX HD CAP SCREW: 3/8-16 x 3/4" LG
⑬	4	1216823	CROSSHEAD:
⑭	1	5277981	NAMEPLATE: (NS)
⑮	2	1187413	SELF-TAPPING SCREW: #4 x 3/8" LG (NS)
⑯	2	1105060	PLUG: 3/4" PIPE
⑰	4	1218743	SLEEVE:
⑱	1	1187577	KEY: 1/4" SQUARE, 1 3/4" LG
⑲	12	1177455	SPRING WASHER: 3/8"
⑳	1	P510882	CRANKSHAFT: HD, DRIVE
㉑	1	P509560	CRANKSHAFT: HD, DRIVEN

NOTES:

- 1 LINE UP THE TIMING MARKS ON THE GEARS AND CHECK THE POSITION OF CRANKS SO THAT WHEN THROWS ON ONE CRANK ARE VERTICAL, THE THROWS ON THE OTHER CRANK ARE HORIZONTAL
- 2 APPLY LIGHT OIL TO CONNECTING ROD BEARINGS, WRIST PINS AND CROSSHEADS

This drawing is the property of FMC Corporation, and may not be used, reproduced, published, or disclosed to others, without express authorization FMC Corp.		FMC Corporation Fluid Control Division 2825 W. Washington Box 1377 Stephenville, Texas 76481	
Unless Otherwise Specified: Remove all burrs & sharp corners .005 R. All diameters concentric unless .001 I.D. Angles ±1/2° .X ±.1 .XX ±.015 .XXX ±.005 Finish 125 RMS All dimensions are in inches		POWER END ASSEMBLY F/E04 HD	
B	REV BOM	5004427	DRG 11-27-00
A	NEW ISSUE	1	SJK 03-15-00
REV	WAS	ECN	BY DATE
RELEASED FOR PRODUCTION ECN DATE		DRAWN SJK 03-14-00 SCALE: NONE CKD. BKM 03-28-00 SIZE DRAWING NO. APPD. RMC 03-28-00 D P510889	

P510889

E04 - HD Power End

ITEM	NO. REQD	PART NO.	PART NAME
	4	126098	CONN ROD BUSHING <i>(Must be Reamed)</i>
①	1	1273545	POWER FRAME:
②	1	1280633	MOUNTING BASE:
③	3	1104444	BALL BEARING: SINGLE
④	1	1104508	BALL BEARING: DOUBLE
⑤	4	P509546	CONNECTING ROD:
⑥	1	1101305	PLUG: 1/4" PIPE
⑦	4	1101095	OIL SEAL:
⑧	1	1273559	GASKET:
⑨	8	P510431	ROD BEARING:
⑩	4	1118553	RETAINER RING:
⑪	4	1219650	WRIST PIN:
⑫	12	1100068	HEX HD CAP SCREW: 3/8-16 x 3/4" LG
⑬	4	1216823	CROSSHEAD:
⑭	1	5277981	NAMEPLATE: (NS)
⑮	2	1187413	SELF-TAPPING SCREW: #4 x 3/16" LG (NS)
⑯	2	1105060	PLUG: 3/4" PIPE
⑰	4	1218743	SLEEVE:
⑱	1	1187577	KEY: 1/4" SQUARE, 1 3/4" LG
⑲	12	1177455	SPRING WASHER: 3/8
⑳	1	P510882	CRANKSHAFT: HD, DRIVE
㉑	1	P509560	CRANKSHAFT: HD, DRIVEN

B