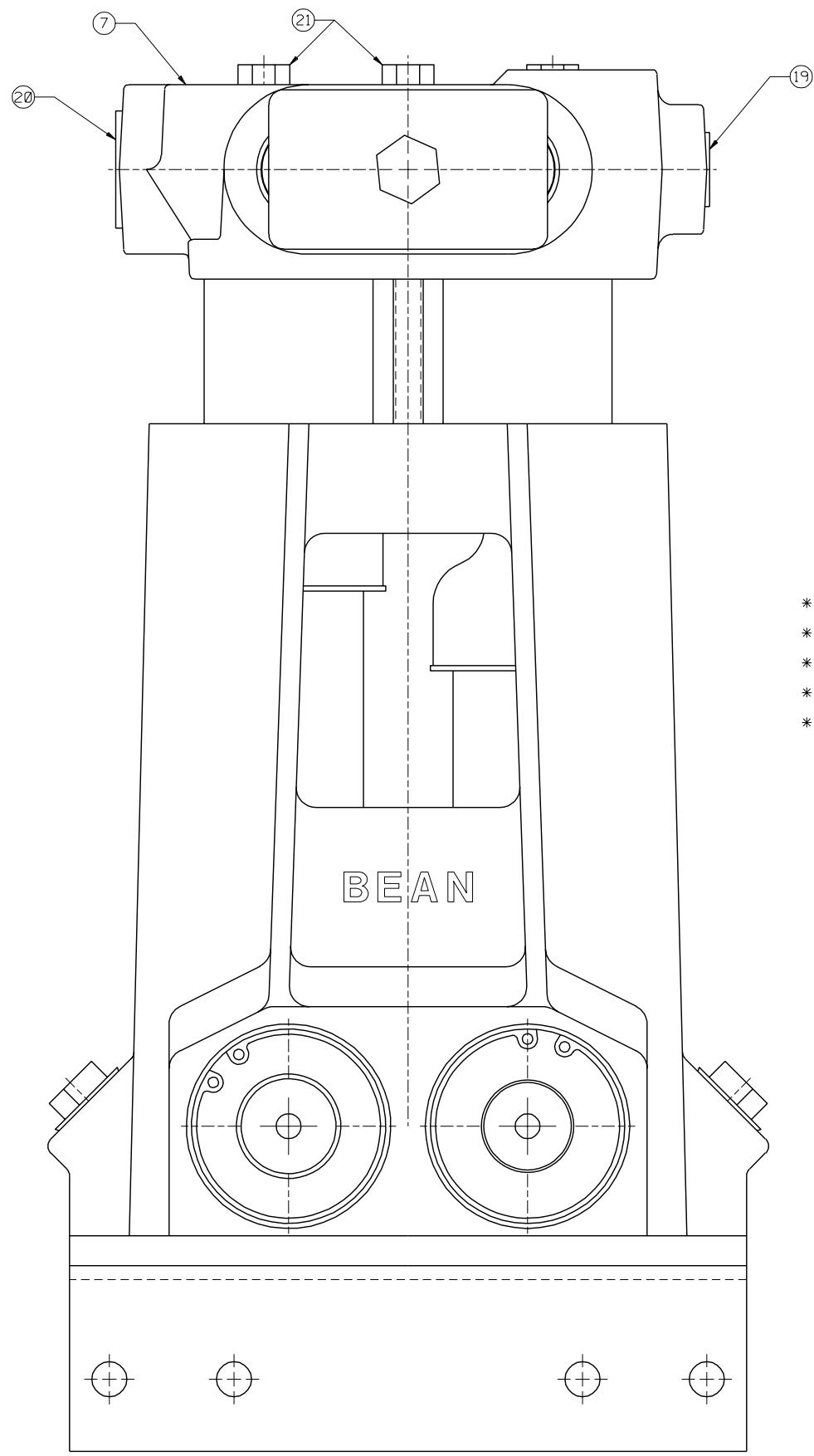
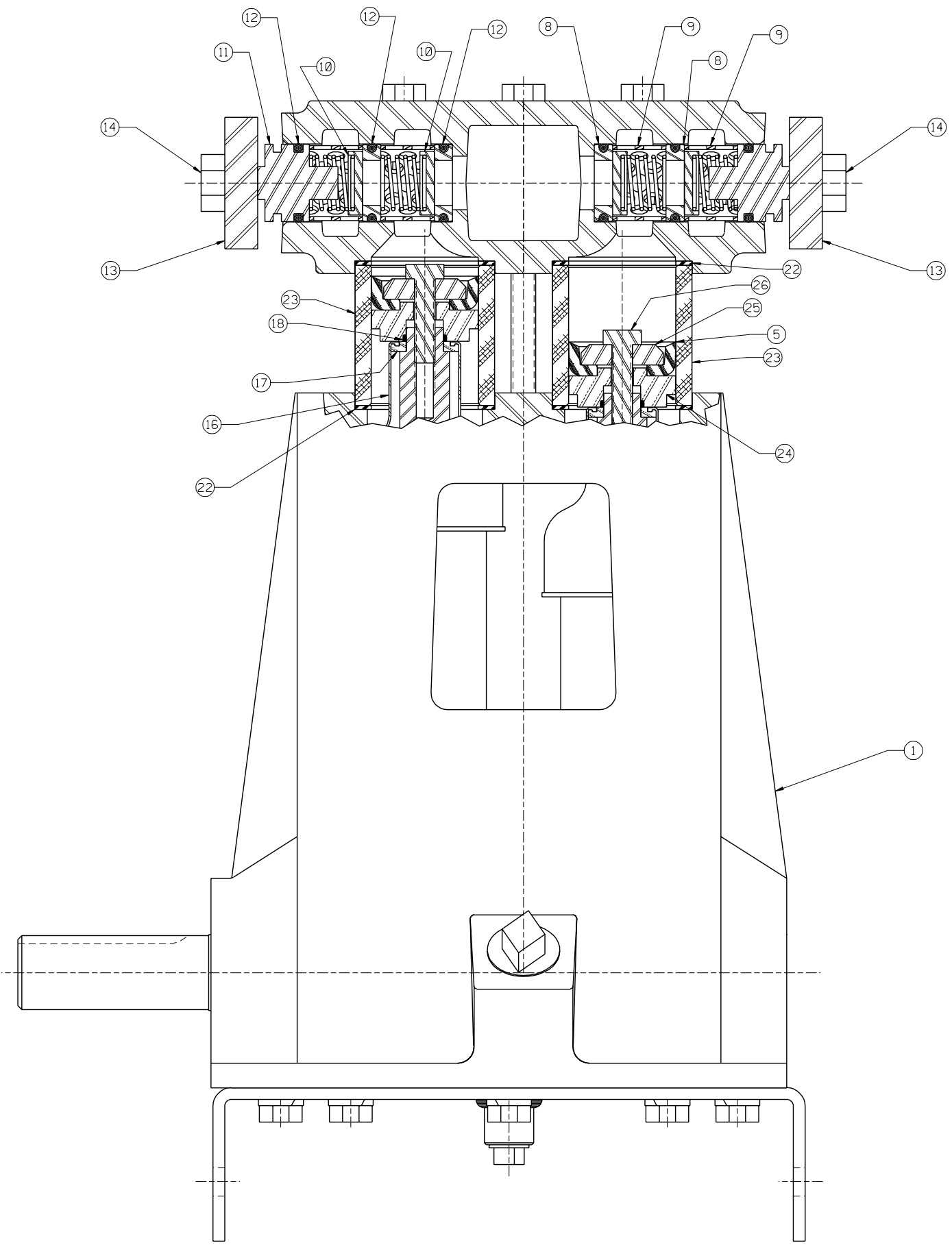


* THESE COMPONENTS ARE LOCATED IN THE FLUID CYLINDER GROUP, ITEM ②
 ** THESE COMPONENTS ARE LOCATED IN THE ATTACHING GROUP, ITEM ③
 *** THESE COMPONENTS ARE LOCATED IN THE CYLINDER GROUP, ITEM ④



ITEM	NO. RECD	PART NO.	PART NAME
①	1	5273602	POWER END:
②	1	5260309	FLUID CYLINDER GROUP:
③	1	5273638	ATTACHING GROUP:
④	2	5273629	CYLINDER GROUP:
⑤	4	5257807	CUP: 1 1/8" DIA, CARBOXILATED NITRILE FABRIC
⑥	1	5266225	LIT KIT:
* ⑦	1	5256139	FLUID CYLINDER: NITRIDED
* ⑧	8	5260142	VALVE SEAT: 450 SST
* ⑨	8	1219610	CAGE: 302 SST
* ⑩	8	5253499	DISC & SPRING ASSEMBLY: 450 SST
* ⑪	4	1219614	VALVE COVER:
* ⑫	12	1177394	O-RING: .921 ID X 1.199 OD X .139 NOM, UNIFORM NO. 213, BUNA-N, 90 DURO
* ⑬	2	1255887	VALVE COVER CLAMP:
* ⑭	2	1100064	HEX HD CAP SCREW: 1/2-13 X 1 1/2" LG.
* ⑮	1	1109987	PLUG: 1/4" PIPE (NOT SHOWN)
** ⑯	4	1279148	UMBRELLA: BLACK
** ⑰	4	1269388	UMBRELLA WASHER:
** ⑱	4	1101339	O-RING: 1 1/16" OD X 1/16" NOM., BUNA-N
** ⑲	1	1177200	CAPLUG: INT. 12
** ⑳	1	1177202	CAPLUG: INT. 17S
** ㉑	4	1101262	HEX HD CAP SCREW: 3/8-16 X 5" LG.
*** ㉒	8	A91684	CYLINDER GASKET:
*** ㉓	4	1241364	CERAMIC CYLINDER:
*** ㉔	4	1282557	PACKING HOLDER:
*** ㉕	4	5257986	PACKING WASHER:
*** ㉖	4	1284516	HEX HD CAP SCREW: 5/16-18 X 1 1/2" LG.

NOTES:
 1 TORQUE FASTENERS PER FMC ENGR SPEC AS-22
 2 TEST PUMP PER FMC ENGR SPEC AS-15
 3 STAMP NAMEPLATE PER FMC ENGR SPEC AS-21
 4 PAINT PUMP PER FMC ENGR SPEC CP-20

This drawing is the property of FMC Corporation, and may not be used, reproduced, published, or disclosed to others, without express authorization FMC Corp.

FMC FMC Corporation
 Fluid Control Division
 2825 W. Washington Box 1377
 Stephenville, Texas 76481

Unless Otherwise Specified:
 Remove all burrs & sharp corners .005 R.
 All diameters concentric within .001 I.D.C.

Angles ±1/2°
 .XX ±.015
 .XXX ±.005
 Finish 125 RMS
 All dimensions are in inches

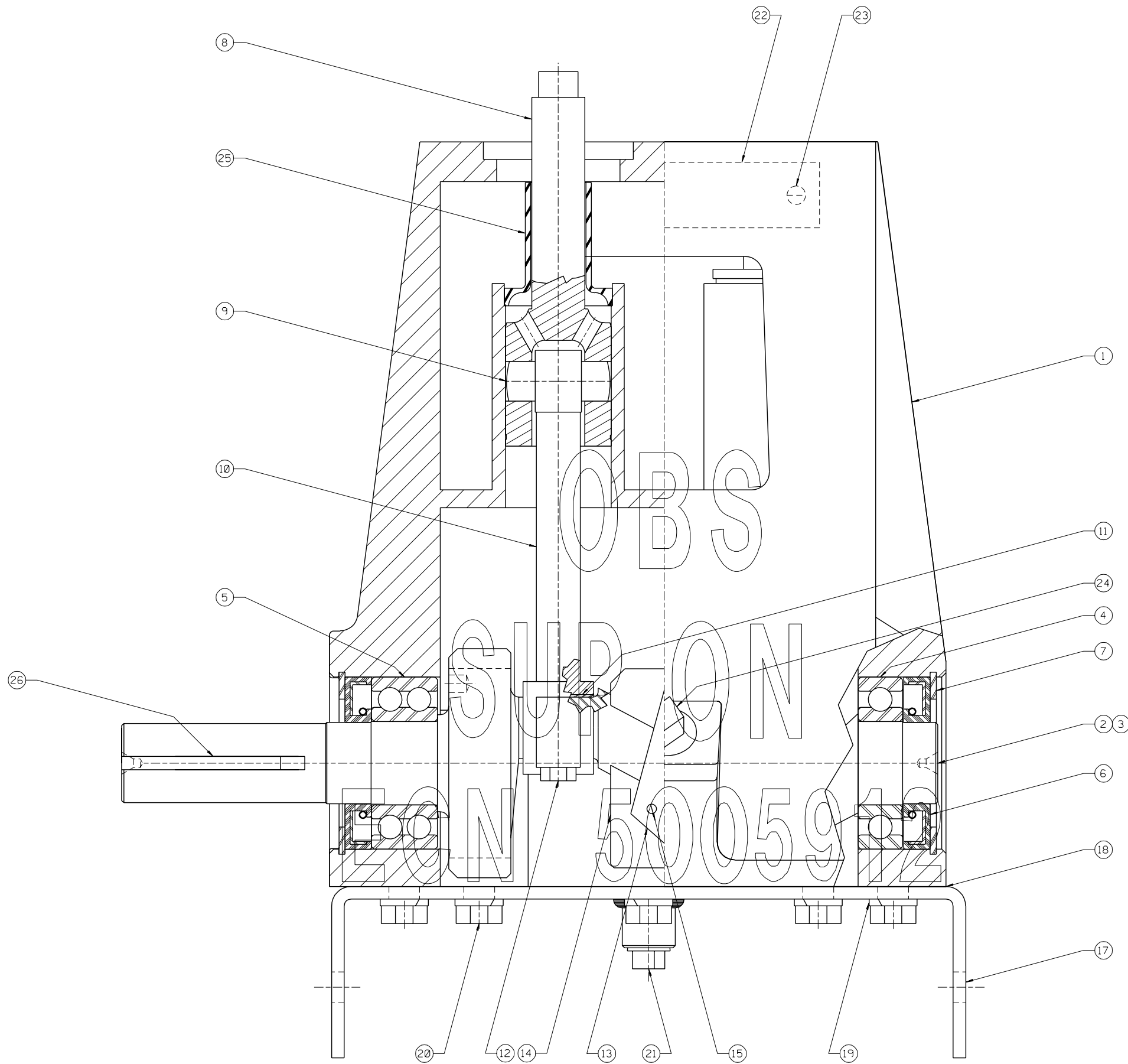
PUMP ASSEMBLY
 E0413, W/1/4" NPT X 3/4" NPT
 FLUID END, CARBOX. NITRILE CUPS,
 450 SST DISC VALVE ASSEMBLIES

RELEASED FOR PRODUCTION	DRAWN	SJK	07-17-00	SCALE:	NONE
ECN	DATE	CKD.	BKM	07-24-00	SIZE
✓	12-16-80	APPD.	RMc	07-25-00	D

DRAWING NO. 1280832

1280832

ITEM	NO. REQD	PART NO.	PART NAME	
②				
①	1	5273602	POWER END:	
②	1	5260309	FLUID CYLINDER GROUP:	
③	1	5273638	ATTACHING GROUP:	
④	2	5273629	CYLINDER GROUP:	
⑤	4	5257807	CUP: 1 $\frac{5}{8}$ " DIA, CARBOXILATED NITRILE FABRIC	
⑥	1	5266225	LIT KIT:	
*	⑦	1	5256139	FLUID CYLINDER: NITRIDED
*	⑧	8	5260142	VALVE SEAT: 450 SST
*	⑨	8	1219610	CAGE: 302 SST
*	⑩	8	5253499	DISC & SPRING ASSEMBLY: 450 SST
*	⑪	4	1219614	VALVE COVER:
*	⑫	12	1177394	O-RING: .921 ID X 1.199 OD X .139 NOM, UNIFORM NO. 213, BUNA-N, 90 DURO
*	⑬	2	1255887	VALVE COVER CLAMP:
*	⑭	2	1100064	HEX HD CAP SCREW: 1/2-13 X 1 1/2" LG.
*	⑮	1	1109987	PLUG: 1/4" PIPE (NOT SHOWN)
**	⑯	4	1279148	UMBRELLA: BLACK
**	⑰	4	1269388	UMBRELLA WASHER:
**	⑱	4	1101339	O-RING: 1 1/16" OD X 1/16" NOM., BUNA-N
**	⑲	1	1177200	CAPLUG: INT. 12
**	⑳	1	1177202	CAPLUG: INT. 17S
**	㉑	4	1101262	HEX HD CAP SCREW: 3/8-16 X 5" LG.
***	㉒	8	A91684	CYLINDER GASKET:
***	㉓	4	1241364	CERAMIC CYLINDER:
***	㉔	4	1282557	PACKING HOLDER:
***	㉕	4	5257986	PACKING WASHER:
***	㉖	4	1284516	HEX HD CAP SCREW: 5/16-18 X 1 1/2" LG.



ITEM	NO. REQD	PART NO.	PART NAME
①	1	1273545	POWER FRAME:
②	1	1273546	CRANKSHAFT: DRIVE
③	1	3269368	CRANKSHAFT: DRIVEN
④	3	1104444	BALL BEARING: SINGLE
⑤	1	1104508	BALL BEARING: DOUBLE
⑥	4	1101095	OIL SEAL:
⑦	4	1118553	RETAINING RING:
⑧	4	1216823	CROSSHEAD:
⑨	4	1219650	WRIST PIN:
⑩	4	1263906	CONNECTING ROD:
⑪	8	1263739	BEARING INSERT:
⑫	8	1278439	HEX HD CAP SCREW: 1/4-20 X 1.00 LG
⑬	2	5274117	BOLTING STRIP:
⑭	2	1273549	OIL SLINGER:
⑮	4	320502	HEX HD CAP SCREW: 10-24 X 3/4" LG
⑯	4	1177576	STOP NUT: 10-24 (NOT SHOWN)
⑰	1	1280633	MOUNTING BASE:
⑱	1	1273559	GASKET:
⑲	12	1177455	WASHER: 3/8" SPRING, STYLE 8
⑳	12	1100068	HEX HD CAP SCREW: 3/8-16 X .75 LG
㉑	1	1101305	PLUG: 1/4" PIPE
㉒	1	5277981	NAMEPLATE:
㉓	2	1187413	SELF TAPPING SCREW: #4 X 3/16" LG
㉔	2	1105060	PLUG: 3/8" PIPE
㉕	4	1218743	SLEEVE: F/ A/E04, POLYETHYLENE
㉖	1	1187577	KEY: 1/4" SQUARE, 1 3/4" LG

NOTES:

- 1 LINE UP THE TIMING MARKS ON THE GEARS AND CHECK THE POSITION OF CRANKS SO THAT WHEN THROWS ON ONE CRANK ARE VERTICAL, THE THROWS ON THE OTHER CRANK ARE HORIZONTAL
- 2 APPLY LIGHT OIL TO CONNECTING ROD BEARINGS, WRIST PINS AND CROSSHEADS

This drawing is the property of FMC Corporation, and may not be used, reproduced, published, or disclosed to others, without express authorization FMC Corp.		FMC Corporation Fluid Control Division 2825 W. Washington Box 1377 Stephenville, Texas 76401	
Unless Otherwise Specified: Remove all burrs & sharp corners .015 R. All diameters concentric within .010 T.I.R.		POWER END ASSEMBLY F/E04, RIGHT HAND DRIVE	
Angles ±1/2° X ±.1 XX ±.015 XXX ±.005 Finish 125 RMS All dimensions are in inches		RELEASED FOR PRODUCTION ECN DATE	
F	REV & DIGITIZED	DRAWN	SJK 07-18-00
REV	WAS	CKD.	BKM 07-24-00
		APPD.	RMc 07-25-00
		SCALE:	NONE
		SIZE	D 5273602
		DRAWING NO.	

5273602

ITEM	NO. REQD	PART NO.	PART NAME
①	1	1273545	POWER FRAME:
②	1	1273546	CRANKSHAFT: DRIVE
③	1	3269368	CRANKSHAFT: DRIVEN
④	3	1104444	BALL BEARING: SINGLE
⑤	1	1104508	BALL BEARING: DOUBLE
⑥	4	1101095	OIL SEAL:
⑦	4	1118553	RETAINING RING:
⑧	4	1216823	CROSSHEAD:
⑨	4	1219650	WRIST PIN:
⑩	4	1263906	CONNECTING ROD:
⑪	8	1263739	BEARING INSERT:
⑫	8	1278439	HEX HD CAP SCREW: 1/4-20 X 1.00 LG
⑬	2	5274117	BOLTING STRIP:
⑭	2	1273549	OIL SLINGER:
⑮	4	320502	HEX HD CAP SCREW: 10-24 X 3/4" LG
⑯	4	1177576	STOP NUT: 10-24 (NOT SHOWN)
⑰	1	1280633	MOUNTING BASE:
⑱	1	1273559	GASKET:
⑲	12	1177455	WASHER: 3/8, SPRING, STYLE 8
⑳	12	1100068	HEX HD CAP SCREW: 3/8-16 X .75 LG
㉑	1	1101305	PLUG: 1/4" PIPE
㉒	1	5277981	NAMEPLATE:
㉓	2	1187413	SELF TAPPING SCREW: #4 X 3/16" LG
㉔	2	1105060	PLUG: 3/4" PIPE
㉕	4	1218743	SLEEVE: F/ A/E04, POLYETHYLENE
㉖	1	1187577	KEY: 1/4" SQUARE, 1 3/4" LG