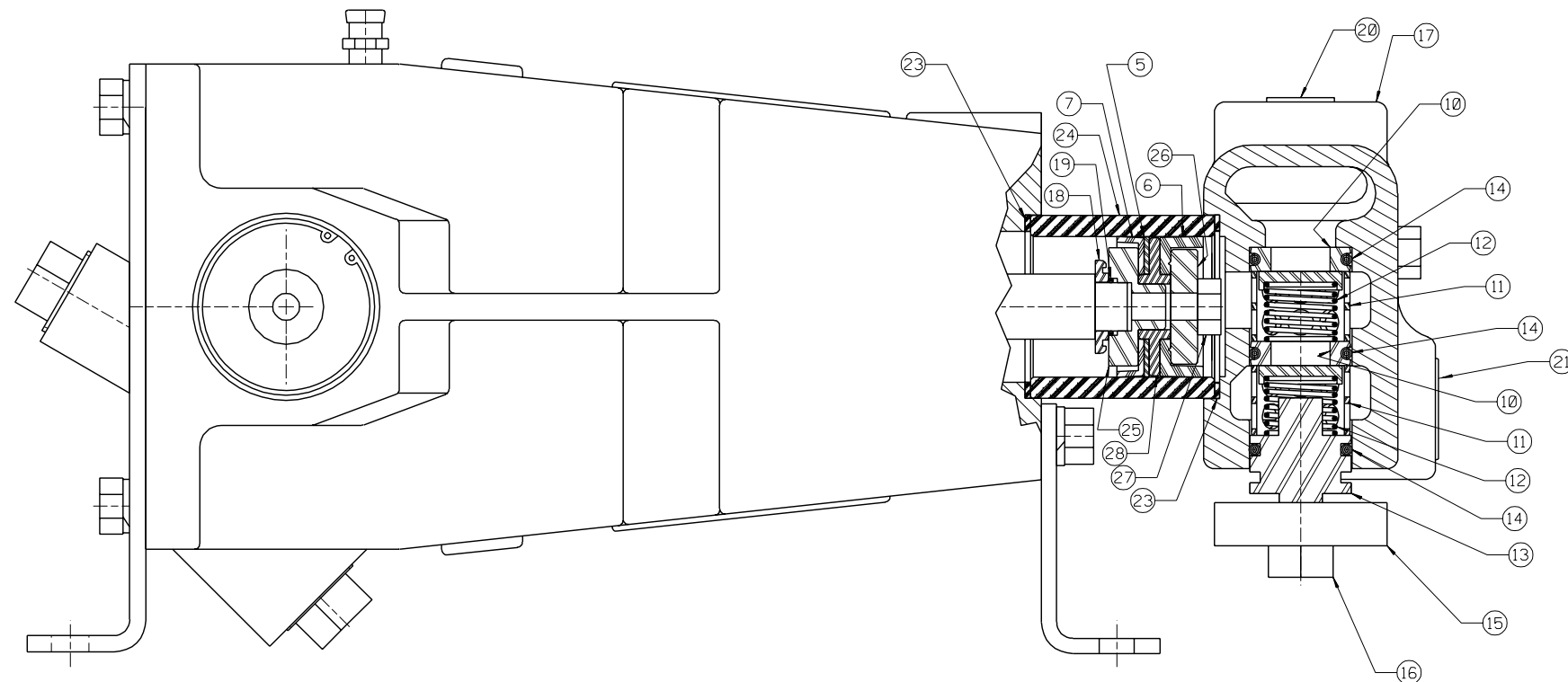
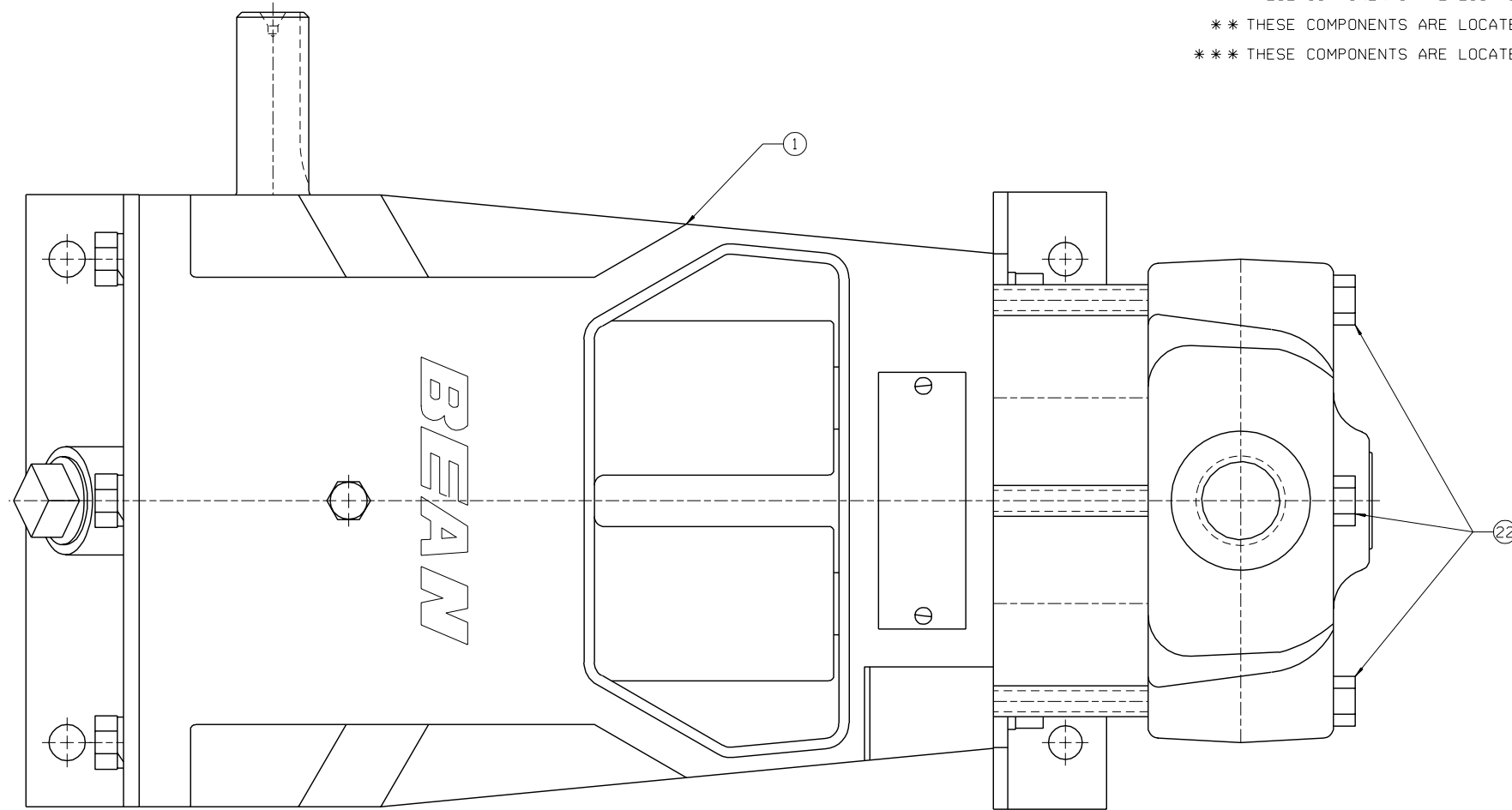


* THESE COMPONENTS ARE LOCATED IN THE FLUID CYLINDER GROUP, ITEM ②
 ** THESE COMPONENTS ARE LOCATED IN THE ATTACHING GROUP, ITEM ③
 *** THESE COMPONENTS ARE LOCATED IN THE CYLINDER GROUP, ITEM ④



ITEM	NO. REQD	PART NO.	PART NAME
①	1	5273622	POWER END ASSEMBLY:
②	1	1241402	FLUID CYLINDER GROUP:
③	1	5273639	ATTACHING GROUP:
④	1	5273636	CYLINDER GROUP:
⑤	2	1255224	BACK UP WASHER:
⑥	2	1255223	PACKING:
⑦	2	1251925	CUP:
⑧	1	5267780	LIT KIT:
⑨	1	1250638	VALVE PULLER: (SHIP LOOSE)
* ⑩	4	1219615	VALVE SEAT:
* ⑪	4	1219610	CAGE:
* ⑫	4	5253499	DISC & SPRING ASSEMBLY:
* ⑬	2	1219614	VALVE COVER:
* ⑭	6	1177394	O-RING: 1 3/16" OD X 1/8" NOM., BUNA-N
* ⑮	1	1255887	VALVE COVER CLAMP:
* ⑯	1	1100064	HEX HD CAP SCREW: 1/2-13 X 1 1/2" LG.
* ⑰	1	1241397	FLUID CYLINDER:
** ⑱	2	1269388	UMBRELLA WASHER:
** ⑲	2	1101339	O-RING: 1/16" OD X 1/16" NOM., BUNA-N
** ⑳	1	1177200	CAPLUG: INT. 12
** ㉑	1	1177201	CAPLUG: INT. 14
** ㉒	3	1101262	HEX HD CAP SCREW: 3/8-16 X 5" LG.
*** ㉓	4	A91684	CYLINDER GASKET:
*** ㉔	2	1241364	CERAMIC CYLINDER:
*** ㉕	2	1247238	PILOT:
*** ㉖	2	5257218	PACKING WASHER:
*** ㉗	2	1284516	HEX HD CAP SCREW: 5/16-18 X 1 1/2" LG.
*** ㉘	2	1247237	WASHER:

NOTES:

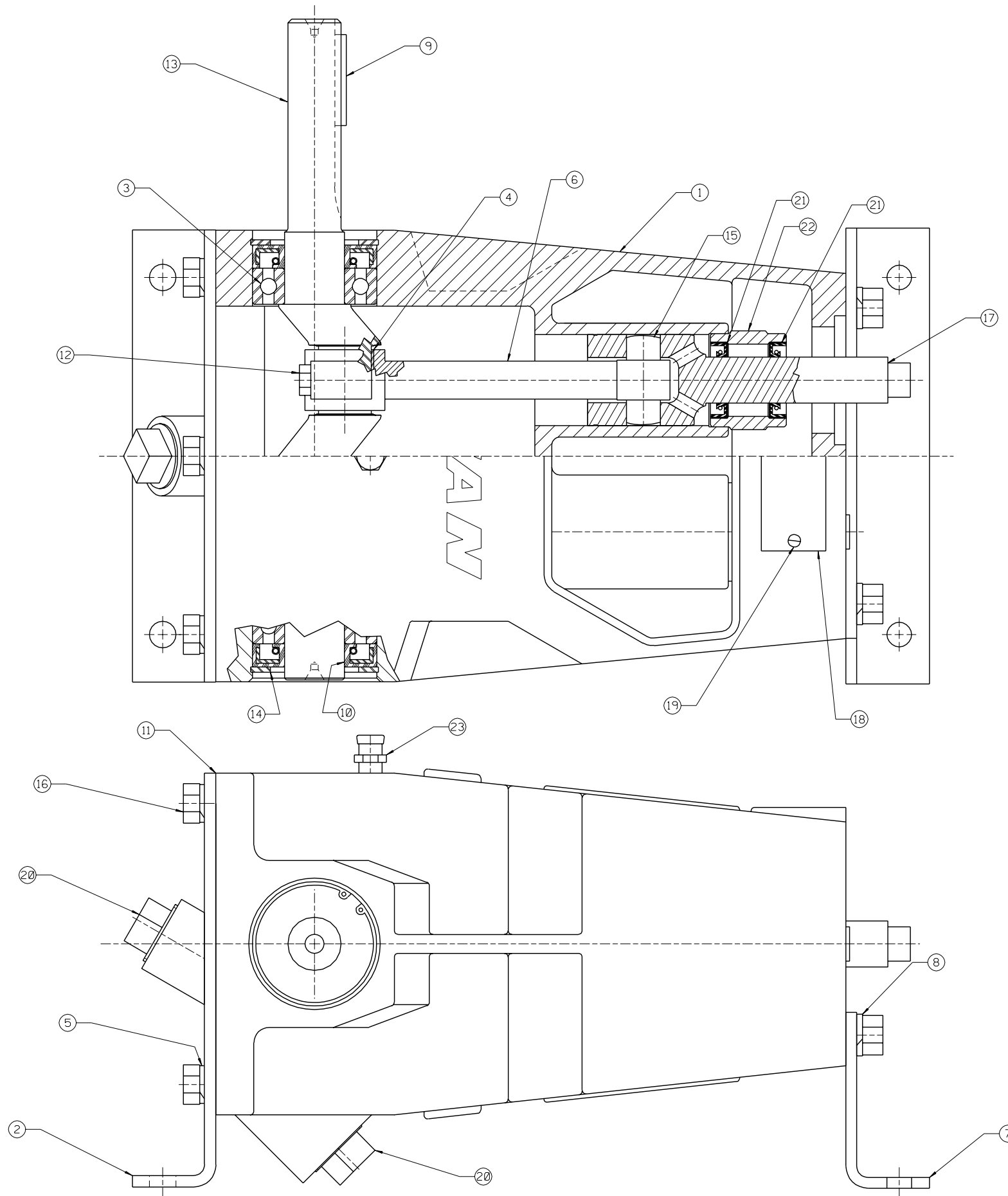
- 1 TORQUE FASTENERS PER FMC ENGR SPEC AS-22
- 2 TEST PUMP PER FMC ENGR SPEC AS-15
- 3 STAMP NAMEPLATE PER FMC ENGR SPEC AS-21
- 4 PAINT PUMP PER FMC ENGR SPEC CP-20

This drawing is the property of FMC Corporation, and may not be used, reproduced, published, or disclosed to others without express authorization FMC Corp.		FMC Corporation Fluid Control Division 2825 W. Washington Box 1377 Stephenville, Texas 76481	
Unless Otherwise Specified: Remove all burrs & sharp corners .015 R. All diameters concentric unless otherwise noted. Angles ±1/2° .XX ±.015 .XXX ±.005 Finish 125 RMS All dimensions are in inches		PUMP ASSEMBLY I0413, W/1" NPT X 3/4" NPT FLUID END, DBL RAEON PKG, SST DISC VALVE ASSEMBLIES	
T REVISIONS REV 1 WAS ECN BY DATE	REVISED & REDRAWN 12306 JKB 01-03-96	DRAWN JKB 01-31-96 CKD. CHJ 01-32-96 APPD. RMc	SCALE: NONE DRAWING NO. 5258401

T	REVISED & REDRAWN	12306	JKB	01-03-96
REV	WAS	ECN	BY	DATE
				10-06-89

5258401

②	ITEM	NO. REQD	PART NO.	PART NAME
	①	1	5273622	POWER END ASSEMBLY:
	②	1	1241402	FLUID CYLINDER GROUP:
	③	1	5273639	ATTACHING GROUP:
	④	1	5273636	CYLINDER GROUP:
	⑤	2	1255224	BACK UP WASHER:
	⑥	2	1255223	PACKING:
	⑦	2	1251925	CUP:
	⑧	1	5267780	LIT KIT:
	⑨	1	1250638	VALVE PULLER: (SHIP LOOSE)
*	⑩	4	1219615	VALVE SEAT:
*	⑪	4	1219610	CAGE:
*	⑫	4	5253499	DISC & SPRING ASSEMBLY:
*	⑬	2	1219614	VALVE COVER:
*	⑭	6	1177394	O-RING: 1 $\frac{3}{16}$ " OD X $\frac{1}{8}$ " NOM., BUNA-N
*	⑮	1	1255887	VALVE COVER CLAMP:
*	⑯	1	1100064	HEX HD CAP SCREW: $\frac{1}{2}$ -13 X 1 $\frac{1}{2}$ " LG.
*	⑰	1	1241397	FLUID CYLINDER:
**	⑱	2	1269388	UMBRELLA WASHER:
**	⑲	2	1101339	O-RING: 1 $\frac{1}{16}$ " OD X $\frac{1}{16}$ " NOM., BUNA-N
**	⑳	1	1177200	CAPLUG: INT. 12
**	㉑	1	1177201	CAPLUG: INT. 14
**	㉒	3	1101262	HEX HD CAP SCREW: 3/8-16 X 5" LG.
***	㉓	4	A91684	CYLINDER GASKET:
***	㉔	2	1241364	CERAMIC CYLINDER:
***	㉕	2	1247238	PILOT:
***	㉖	2	5257218	PACKING WASHER:
***	㉗	2	1284516	HEX HD CAP SCREW: $\frac{5}{16}$ -18 X 1 $\frac{1}{2}$ " LG.
***	㉘	2	1247237	WASHER:



ITEM	NO. REQD	PART NO.	PART NAME
(1)	1	5251629	POWER FRAME:
(2)	1	5251279	REAR FOOT:
(3)	2	1177804	BALL BEARING:
(4)	4	1263739	BEARING INSERT:
(5)	6	1177455	SPRING WASHER: 3/8"
(6)	2	1263906	CONNECTING ROD:
(7)	1	5251281	FRONT FOOT:
(8)	2	1100243	LOCK WASHER: 3/8"
(9)	1	1100841	KEY: 3/16" SQ. X 1.50" LG.
(10)	2	1219669	OIL SEAL:
(11)	1	1219606	GASKET:
(12)	4	1278439	HEX HD CAP SCREW: 1/4"-20 X 1" LG
(13)	1	1244980	CRANKSHAFT:
(14)	2	1113528	RETAINER RING: INT 2.06 BORE
(15)	2	1219650	WRIST PIN:
(16)	8	1100068	HEX HD CAP SCREW: 3/8"-16 X 3/4" LG
(17)	2	5251590	CROSSHEAD:
(18)	1	5277981	NAMEPLATE:
(19)	2	1187413	SELF-TAPPING SCREW: #4 X 3/16" LG
(20)	1	1105060	PLUG: 3/4" PIPE
(21)	4	1283603	SEAL:
(22)	2	5251630	SEAL HOLDER:
(23)	1	1177536	LUBE VENT:

NOTES:
1 TORQUE FASTENER PER FMC SPEC AS-22

<small>This drawing is the property of FMC Corporation, and may not be used, reproduced, published, or disclosed to others, without express authorization FMC Corp.</small>		FMC Corporation Fluid Control Division 2825 W. Washington Box 1377 Stephenville, Texas 76401	
<small>Unless Otherwise Specified: Remove all burrs & sharp corners .015 R. All dimensions conform to ASME Y14.5M. Angles ±1/2° .X ±.1 .XX ±.015 .XXX ±.005 Finish 125 RMS All dimensions are in inches.</small>		POWER END ASSEMBLY I04 RH	
RELEASED FOR PRODUCTION	ECN	DATE	SCALE: NONE
REV	WAS	ECN BY DATE	SIZE DRAWING NO.
			D 5273622

F	REVISED & DIGITIZED	13561	CHJ	03-25-96
REV	WAS	ECN	BY	DATE

5273622

ITEM	NO. REQD	PART NO.	PART NAME
①	1	5251629	POWER FRAME:
②	1	5251279	REAR FOOT:
③	2	1177804	BALL BEARING:
④	4	1263739	BEARING INSERT:
⑤	6	1177455	SPRING WASHER: $\frac{3}{8}$ "
⑥	2	1263906	CONNECTING ROD:
⑦	1	5251281	FRONT FOOT:
⑧	2	1100243	LOCK WASHER: $\frac{3}{8}$ "
⑨	1	1108841	KEY: $\frac{3}{16}$ " SQ. X 1.50 LG.
⑩	2	1219669	OIL SEAL:
⑪	1	1219606	GASKET:
⑫	4	1278439	HEX HD CAP SCREW: $\frac{1}{4}$ -20 X 1" LG
⑬	1	1244980	CRANKSHAFT:
⑭	2	1113528	RETAINER RING: INT 2.06 BORE
⑮	2	1219650	WRIST PIN:
⑯	8	1100068	HEX HD CAP SCREW: $\frac{3}{8}$ -16 X $\frac{3}{4}$ " LG
⑰	2	5251590	CROSSHEAD:
⑱	1	5277981	NAMEPLATE:
⑲	2	1187413	SELF-TAPPING SCREW: #4 X $\frac{3}{16}$ " LG
⑳	1	1105060	PLUG: $\frac{3}{4}$ " PIPE
㉑	4	1283603	SEAL:
㉒	2	5251630	SEAL HOLDER:
㉓	1	1177536	LUBE VENT: