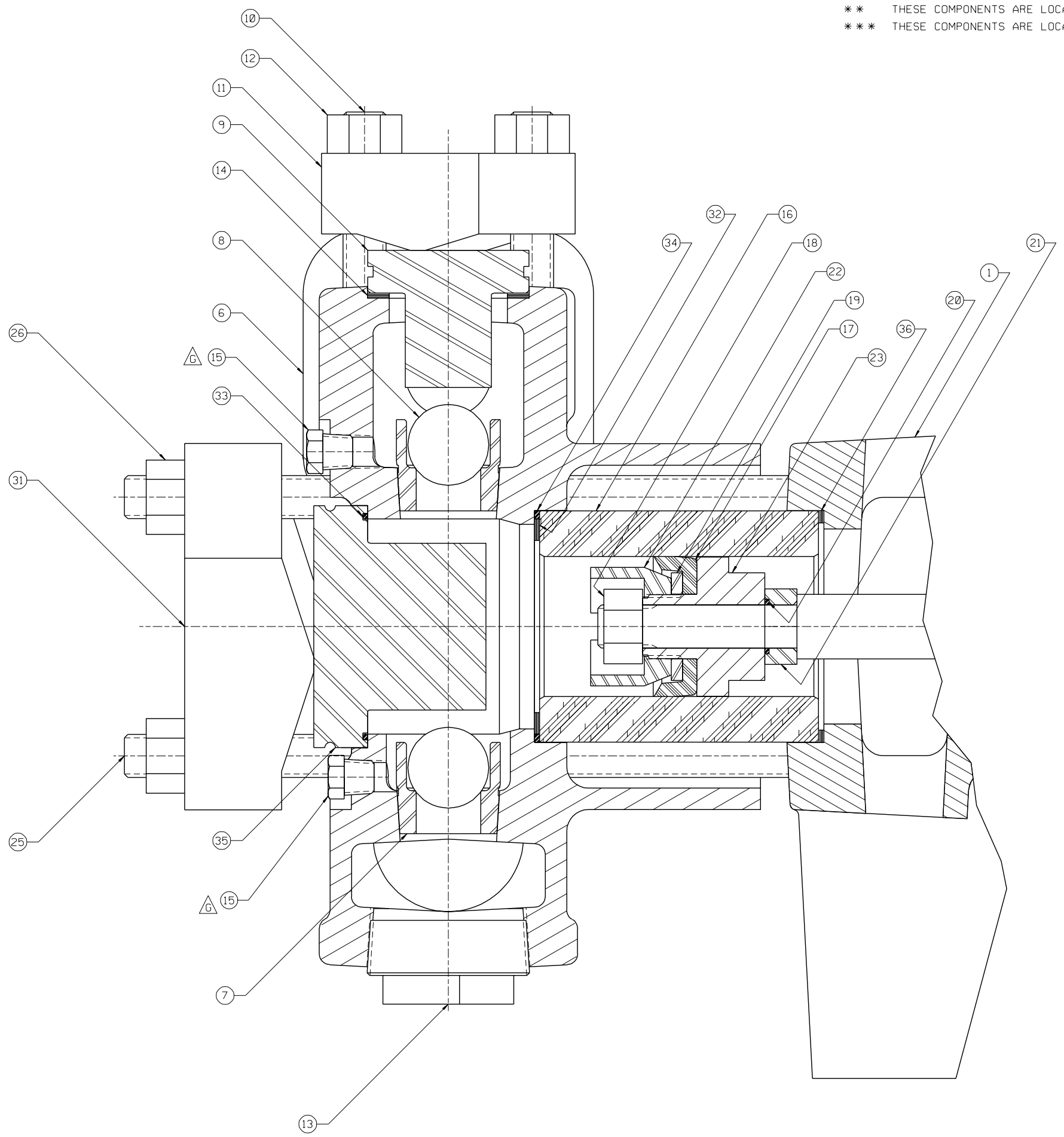


* THESE COMPONENTS ARE LOCATED IN THE FLUID CYLINDER ASSEMBLY, ITEM ②
 ** THESE COMPONENTS ARE LOCATED IN THE CYLINDER/PISTON GROUP, ITEM ③
 *** THESE COMPONENTS ARE LOCATED IN THE ATTACHING GROUP, ITEM ④



ITEM	NO. RECD	PART NO.	PART NAME
①	1	5271247	POWER END ASSEMBLY:
②	1	5271252	FLUID CYLINDER ASSEMBLY:
③	3	5271262	CYLINDER/PISTON GROUP:
④	1	5271265	ATTACHING GROUP:
⑤	1	5271266	CARTON/MANUAL GROUP:
△	*	⑥	1 1255266 FLUID CYLINDER:
*	*	⑦	6 1225327 VALVE SEAT:
*	*	⑧	6 1187738 BALL: 15/16 DIA, 440 SST, GR 100
*	*	⑨	3 A5003 VALVE COVER: STEEL
*	*	⑩	6 A5012 STUD: 1/2-13 UNC X 2 13/16 LG
*	*	⑪	3 1271716 VALVE COVER CLAMP:
*	*	⑫	6 1121511 HEX NUT: 1/2-13
*	*	⑬	2 1105105 PLUG: 1/2 PIPE BLK STD
*	*	⑭	3 1280026 GASKET: F/L09 VLV COVER, KEV/NIT
△	*	⑮	6 P501267 PLUG: PIPE, HEX HD, 1/8" NPT
*	**	⑯	3 5263420 CYLINDER: 1 5/8" ID
*	**	⑰	3 5257807 CUP: CARBOXILATED NITRILE
*	**	⑱	3 320276 HEX NUT: 1/2-13, SST
*	**	⑲	3 5263422 PACKING WASHER:
*	**	⑳	3 1101176 O-RING: 5/8" OD X 1/16" NOM., BUNA-N 70 DURO
*	**	㉑	3 1284632 SEAL HOLDER:
*	**	㉒	3 5263424 PACKING NUT:
*	**	㉓	3 5263421 CUP HOLDER:
*	**	㉔	2 A5009 STUD: 1/2-13 UNC-2A X 6.63 LG. (NS)
*	**	㉕	6 A5011 STUD: 1/2-13 UNC-2A X 8.63 LG.
*	**	㉖	8 1121511 HEX NUT: 1/2-13
*	**	㉗	1 1177201 CAPLUG: INT. 14 (NOT SHOWN)
*	**	㉘	1 1177203 CAPLUG: INT. 20S (NOT SHOWN)
*	**	㉙	1 1187039 PETCOCK: (NOT SHOWN)
*	**	㉚	1 1187577 KEY: 1/4 SQ X 1 3/4, STL PLAIN (NS)
*	**	㉛	3 1271415 CYLINDER HEAD CLAMP:
*	**	㉜	3 1280024 GASKET CYL: 2.69 X2.41 X.06, KEV/NIT
*	**	㉝	3 320325 O-RING: 2 5/8 OD X 1/16, BUNA-N
*	**	㉞	3 320444 O-RING: 2 1/2 ID X 3/32, BUNA-N DURO-90
*	**	㉟	3 5263423 CYLINDER COVER:
*	**	㊱	3 5266488 RING SEAL: STEEL

NOTES:
 1 TORQUE FASTENERS PER FMC ENGR SPEC AS-22
 2 TEST PUMP PER FMC ENGR SPEC AS-15
 3 STAMP NAMEPLATE PER FMC ENGR SPEC AS-21
 4 PAINT PUMP PER FMC ENGR SPEC CP-20

This drawing is the property of FMC Corporation, and may not be used, reproduced, published, or disclosed to others, without express authorization FMC Corp.

FMC FMC Corporation
 Fluid Control Division
 2825 W. Washington Box 1377
 Stephenville, Texas 76481

Unless Otherwise Specified:
 Remove all burrs & sharp corners .005 R.
 All diameters concentric unless .001 LSC.

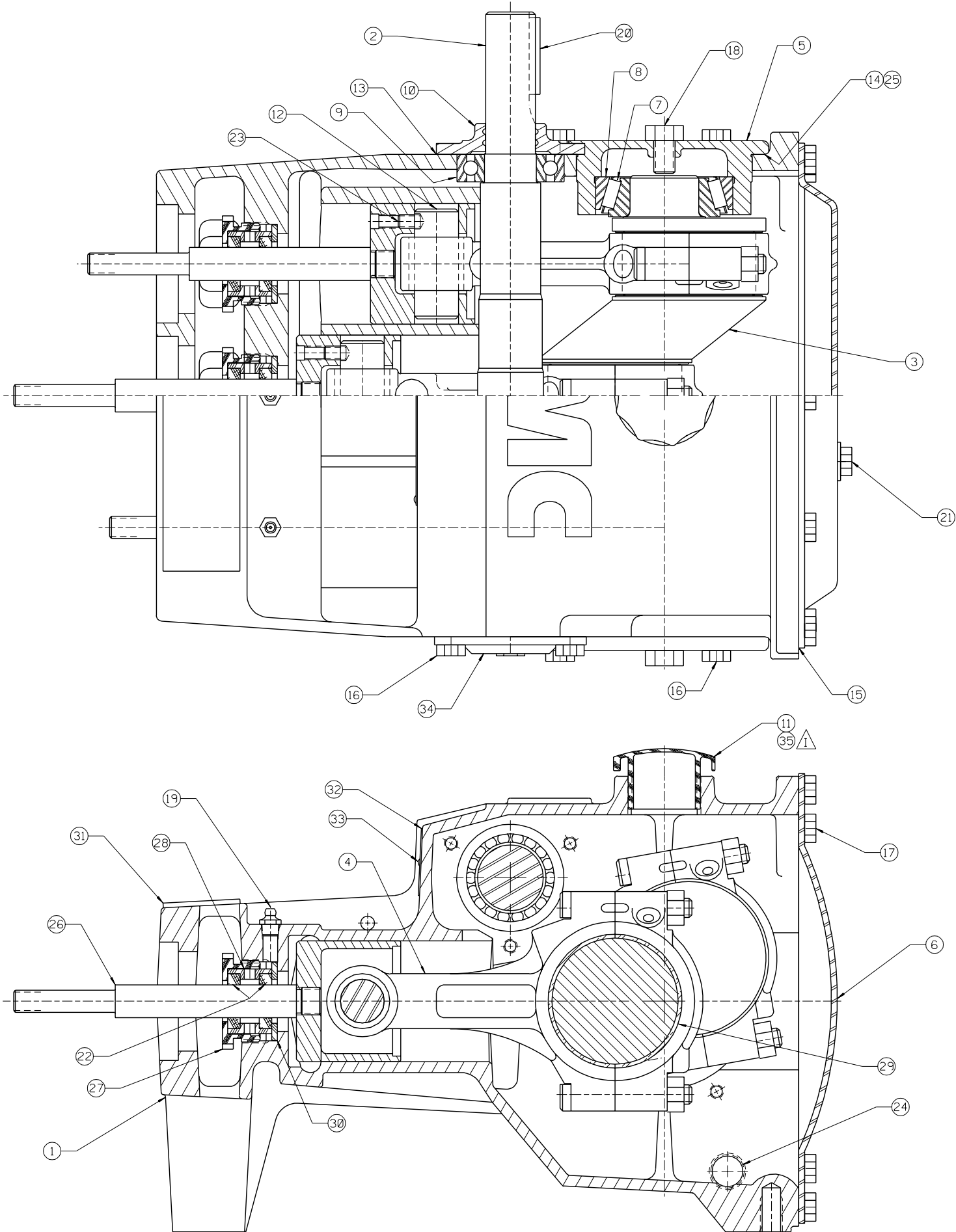
Angles ±1/2°
 .XX ±.015
 .XXX ±.005
 Finish 125 RMS
 All dimensions are in inches

PUMP ASSEMBLY
 L0913B, W/1 1/2" NPT X 1" NPT FLUID
 END, CARBOX. NITRILE CUP & 440
 SST BALL VALVES

G	REV BOM	5002284	BKM	06-16-98	RELEASED FOR PRODUCTION	DRAWN	SJK	04-28-98	SCALE:	NONE	
F	REV & DIGITIZED	5002037	BKM	04-28-98	ECN	DATE	CKD.	BKM	04-30-98	SIZE	DRAWING NO.
REV	WAS	ECN	BY	DATE	✓	✓	APPD.	RMc	05-18-98	D	5263425

5263425

ITEM	NO. REQD	PART NO.	PART NAME
ITEM ②			
①	1	5271247	POWER END ASSEMBLY:
②	1	5271252	FLUID CYLINDER ASSEMBLY:
③	3	5271262	CYLINDER/PISTON GROUP:
④	1	5271265	ATTACHING GROUP:
⑤	1	5271266	CARTON/MANUAL GROUP:
△ *	⑥	1	1255266 FLUID CYLINDER:
*	⑦	6	1225327 VALVE SEAT:
*	⑧	6	1187738 BALL: 1 ⁵ / ₁₆ DIA, 440 SST, GR 100
*	⑨	3	A5003 VALVE COVER: STEEL
*	⑩	6	A5012 STUD: 1/2-13 UNC X 2 ¹³ / ₁₆ LG
*	⑪	3	1271716 VALVE COVER CLAMP:
*	⑫	6	1121511 HEX NUT: 1/2-13
*	⑬	2	1105105 PLUG: 1 1/2 PIPE BLK STD
*	⑭	3	1280026 GASKET: F/L09 VLV COVER, KEV/NIT
△ *	⑮	6	P501267 PLUG: PIPE, HEX HD, 1/8" NPT
**	⑯	3	5263420 CYLINDER: 1 ⁵ / ₈ " ID
**	⑰	3	5257807 CUP: CARBOXYLATED NITRILE
**	⑱	3	320276 HEX NUT: 1/2-13, SST
**	⑲	3	5263422 PACKING WASHER:
**	⑳	3	1101176 O-RING: 5/8" OD X 1/16" NOM., BUNA-N 70 DURO
**	㉑	3	1284632 SEAL HOLDER:
**	㉒	3	5263424 PACKING NUT:
**	㉓	3	5263421 CUP HOLDER:
***	㉔	2	A5009 STUD: 1/2-13 UNC-2A X 6.63 LG. (NS)
***	㉕	6	A5011 STUD: 1/2-13 UNC-2A X 8.63 LG.
***	㉖	8	1121511 HEX NUT: 1/2-13
***	㉗	1	1177201 CAPPLUG: INT. 14 (NOT SHOWN)
***	㉘	1	1177203 CAPPLUG: INT. 20S (NOT SHOWN)
***	㉙	1	1187039 PETCOCK: (NOT SHOWN)
***	㉚	1	1187577 KEY: 1/4 SQ X 1 3/4, STL PLAIN (NS)
***	㉛	3	1271415 CYLINDER HEAD CLAMP:
***	㉜	3	1280024 GASKET CYL: 2.69 X2.41 X.06, KEV/NIT
***	㉝	3	320325 O-RING: 2 ⁵ / ₈ OD X 1/16, BUNA-N
***	㉞	3	320444 O-RING: 2 1/2 ID X 3/32, BUNA-N DURO-90
***	㉟	3	5263423 CYLINDER COVER:
***	㊱	3	5266488 RING SEAL: STEEL



ITEM	NO. RECD	PART NO.	PART NAME
①	1	5260537	POWER FRAME:
②	1	1265098	PINION SHAFT:
③	1	1279071	ECCENTIRC GEAR ASSEMBLY:
④	3	18710	CONNECTING ROD ASSEMBLY:
⑤	2	1279064	ECCENTRIC BEARING CAP:
⑥	1	1279063	BACKCOVER:
⑦	2	1101242	BEARING CONE: 1.56 ID, TIM #26881
⑧	2	1177287	BEARING CUP: 3.125 OD, TIM #26822
⑨	2	1104444	BALL BEARING: 1.18 ID, SINGLE ROW
⑩	1	A5005	PINION BEARING CAP:
⑪	1	A5054	OIL CAP:
⑫	3	A5006	WRIST PIN:
⑬	2	A5026	GASKET: PINION CAP
⑭	2	A5025	GASKET: BEARING CAP
⑮	1	1279065	GASKET: BACKCOVER
⑯	12	1100068	HEX HD. CAP SCREW: 3/8-16 X 3/4" LG.
⑰	14	1106910	HEX HD. CAP SCREW: 3/8-16 X 1/2" LG.
⑱	2	1106980	HEX HD. CAP SCREW: 1/2-13 X 3/4" LG.
⑲	3	1100759	LUBE FITTING:
⑳	1	1187577	KEY: 1/4" SQ. X 1 3/4" LG.
⚠⑳	1	3269460	PLUG: PIPE, 1/8" NPT, POLY (NS)
㉑	6	1283603	OIL SEAL: PLUNGER ROD
㉒	6	1103470	SET SCREW: 5/16-18 X 1/2" LG., SOC. HD.
㉓	2	1187048	PLUG: 1/2" PIPE, MAG.
㉔	5	1252594	SHIM:
㉕	3	1250876	CROSSHEAD ASSEMBLY:
㉖	3	1283600	PACKING NUT:
㉗	3	1283601	SLEEVE:
⚠㉘	6	P506697	ROD BEARING
㉙	3	1283602	PACKING WASHER:
㉚	1	1214260	INSPECTION PLATE:
㉛	1	5277981	NAMEPLATE:
㉜	2	1187413	SELF-TAPPING SCREW: #4 X 3/16" LG.
㉝	1	1225769	PINION BEARING CAP: CLOSED
⚠㉞	1	3269461	PLUG: PIPE, 1 1/4" NPT, POLY, (NS)

NOTES:
 1 TORQUE FASTENERS PER FMC ENGR SPEC AS-22
 ⚠2 ITEMS 21 AND 35 TO BE INSTALLED AFTER TESTING BEFORE CLEANING AND PAINTING

This drawing is the property of FMC Corporation, and may not be used, reproduced, published, or disclosed to others, without express authorization FMC Corp.		FMC Corporation Fluid Control Division 2825 W. Washington Box 1377 Stephenville, Texas 76481	
Unless Otherwise Specified: Remove all burrs & sharp corners .005 R. All diameters concentric unless .001 I.D. Angles ±1/2° .X ±.015 .XX ±.015 .XXX ±.005 Finish 125 RMS All dimensions are in inches		POWER END ASSEMBLY F/L09, LH	
J	REVISE BOM	500582	DRG 05-15-00
I	REVISE BOM	500481	BKM 09-29-97
H	REVISED & DIGITIZED	12755	CHJ 03-13-95
REV	WAS	ECN	BY DATE
RELEASED FOR PRODUCTION ECN DATE		DRAWN CHJ CKD. GWM APPD. RMC	03-13-95 03-14-95 03-14-95
SCALE: NONE SIZE: DRAWING NO.		5271247	

5271247

ITEM	NO. REQD	PART NO.	PART NAME
①	1	5260537	POWER FRAME:
②	1	1265098	PINION SHAFT:
③	1	1279071	ECCENTIRC GEAR ASSEMBLY:
④	3	18710	CONNECTING ROD ASSEMBLY:
⑤	2	1279064	ECCENTRIC BEARING CAP:
⑥	1	1279063	BACKCOVER:
⑦	2	1101242	BEARING CONE: 1.56 ID, TIM #26881
⑧	2	1177287	BEARING CUP: 3.125 OD, TIM #26822
⑨	2	1104444	BALL BEARING: 1.18 ID, SINGLE ROW
⑩	1	A5005	PINION BEARING CAP:
⑪	1	A5054	OIL CAP:
⑫	3	A5006	WRIST PIN:
⑬	2	A5026	GASKET: PINION CAP
⑭	2	A5025	GASKET: BEARING CAP
⑮	1	1279065	GASKET: BACKCOVER
⑯	12	1100068	HEX HD. CAP SCREW: $\frac{3}{8}$ -16 X $\frac{3}{4}$ " LG.
⑰	14	1106910	HEX HD. CAP SCREW: $\frac{3}{8}$ -16 X $\frac{1}{2}$ " LG.
⑱	2	1106980	HEX HD. CAP SCREW: $\frac{1}{2}$ -13 X $\frac{3}{4}$ " LG.
⑲	3	1100759	LUBE FITTING:
⑳	1	1187577	KEY: $\frac{1}{4}$ " SQ. X $1\frac{3}{4}$ " LG.
㉑	1	3269460	PLUG: PIPE, $\frac{1}{8}$ " NPT, POLY (NS)
㉒	6	1283603	OIL SEAL: PLUNGER ROD
㉓	6	1103470	SET SCREW: $\frac{5}{16}$ -18 X $\frac{1}{2}$ " LG., SOC. HD.
㉔	2	1187048	PLUG: $\frac{1}{2}$ " PIPE, MAG.
㉕	5	1252594	SHIM:
㉖	3	1250876	CROSSHEAD ASSEMBLY:
㉗	3	1283600	PACKING NUT:
㉘	3	1283601	SLEEVE:
㉙	6	P506697	ROD BEARING
㉚	3	1283602	PACKING WASHER:
㉛	1	1214260	INSPECTION PLATE:
㉜	1	5277981	NAMEPLATE:
㉝	2	1187413	SELF-TAPPING SCREW: #4 X $\frac{3}{16}$ " LG.
㉞	1	1225769	PINION BEARING CAP: CLOSED
㉟	1	3269461	PLUG: PIPE, $1\frac{1}{4}$ " NPT, POLY, (NS)

△

△

△