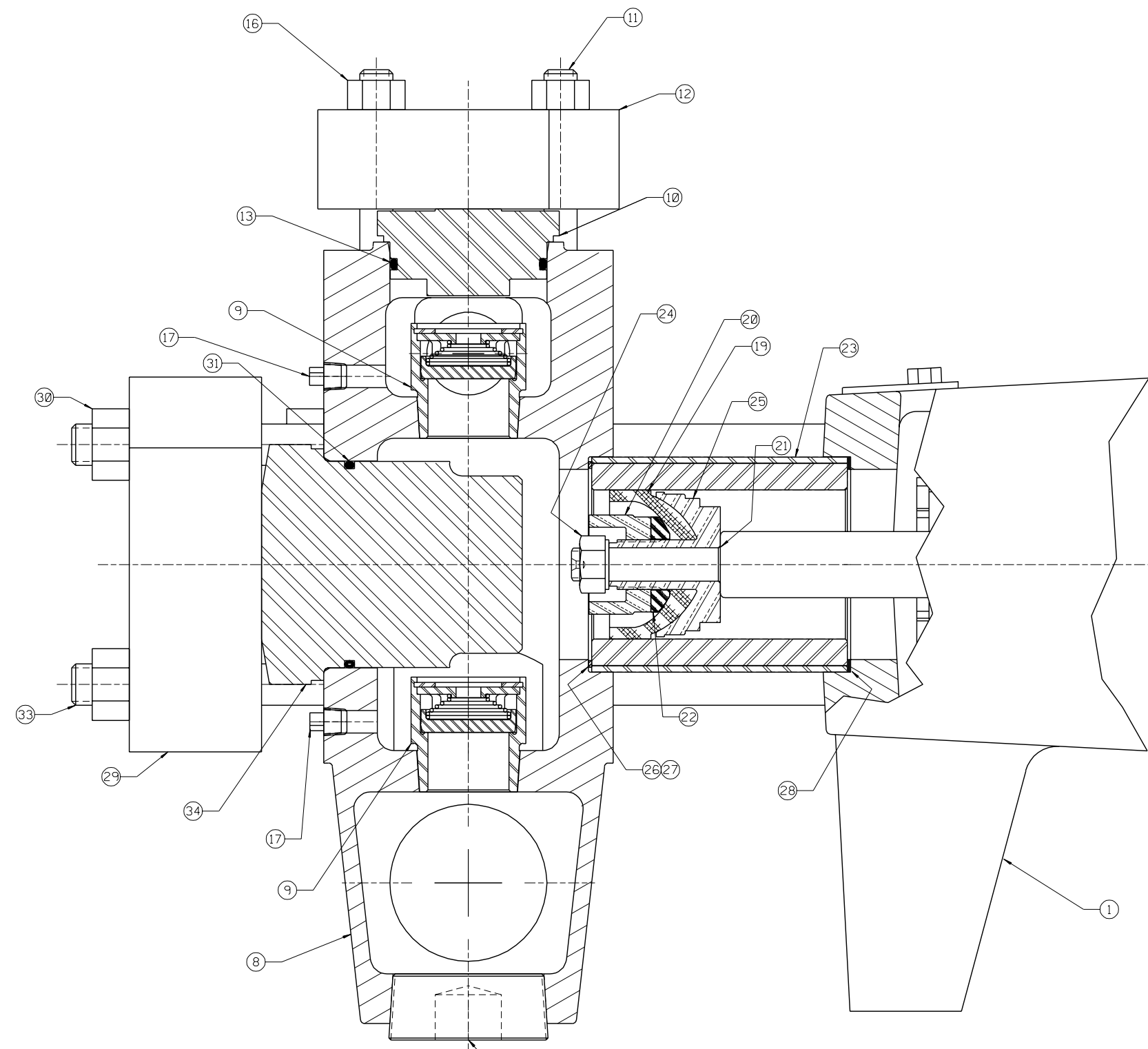


* THESE COMPONENTS ARE LOCATED IN THE FLUID CYLINDER ASSEMBLY, ITEM ②
 ** THESE COMPONENTS ARE LOCATED IN THE CYLINDER/PISTON GROUP, ITEM ③
 *** THESE COMPONENTS ARE LOCATED IN THE ATTACHING GROUP, ITEM ④



ITEM	NO. RECD	PART NO.	PART NAME
①	1	5271955	POWER END ASSEMBLY:
②	1	5268123	FLUID CYLINDER ASSEMBLY:
③	3	5268135	CYLINDER/PISTON GROUP:
④	1	3269003	ATTACHING GROUP:
⑤	1	1105558	COUPLING: 1/4" PIPE (NOT SHOWN)
⑥	1	1105902	NIPPLE: 1/4" PIPE, 6" LG. (NOT SHOWN)
⑦	1	5262452	LIT KIT: (NOT SHOWN)
⑧	1	5257262	FLUID CYLINDER:
⑨	6	5255419	VALVE ASSEMBLIES:
⑩	3	1283530	VALVE COVER:
⑪	6	1248372	STUD: 1/2-13 UNC-2A X 4.0 LG.
⑫	3	5258151	VALVE COVER CLAMP:
⑬	3	1181154	O-RING: 2 3/8" OD X .125 NOM., BUNA-N
⑭	2	1177205	CAPLUG: INT. 44 (NOT SHOWN)
⑮	2	1177202	CAPLUG: INT. 17S (NOT SHOWN)
⑯	6	1121511	HEX NUT: 1/2-13
⑰	4	P501267	PLUG: 1/8" PIPE
⑱	3	1105121	PLUG: 2" PIPE
⑲	3	5260052	CUP:
⑳	3	A5016	PLUNGER NUT:
㉑	3	1101176	O-RING: 5/8" OD X 1/16" NOM., BUNA-N
㉒	3	1207289	WASHER:
㉓	3	5252520	CYLINDER: 2 1/4" ID
㉔	3	8309	NUT: 1/2-13
㉕	3	5257337	CUP HOLDER:
㉖	3	1284369	GASKET: FLUID CYLINDER
㉗	3	5257921	O-RING: 3.25 OD X 1/16" NOM., BUNA-N
㉘	3	1279676	GASKET: CYLINDER
㉙	3	3266108	CYLINDER HEAD CLAMP:
㉚	10	1121513	HEX NUT: 5/8-11
㉛	3	1177476	O-RING: 3 1/8" OD X 1/8" NOM., BUNA-N
㉜	1	1187039	PETCOCK: (NOT SHOWN)
㉝	6	5251859	STUD: 5/8-11 UNC-2A X 12.25 LG.
㉞	3	3266137	CYLINDER COVER:
㉟	2	1248349	STUD: 5/8-11 UNC-2A X 9.50 LG.
㊱	3	1105255	PLUG: 2" NPT HEX SOC

NOTES:

- TORQUE FASTENERS PER FMC ENGR SPEC AS-22
- TEST AT 1650 INPUT RPM WITH DISCHARGE PRESSURE OF 2000 PSI FOR 45 MINUTES. PER ENGR SPEC AS-15
- STAMP NAMEPLATE WITH THE FOLLOWING DATA.
 MODEL -- L1118D SC, P.N. -- 5274991, S.N. --
 RPM -- 1650, GPM -- 65, PSI -- 2000, HP -- 90
- PAINT PUMP PER FMC ENGR SPEC CP-20
- SUBSTITUTE HEX SOC PLUG, ITEM 36, FOR ITEM 18

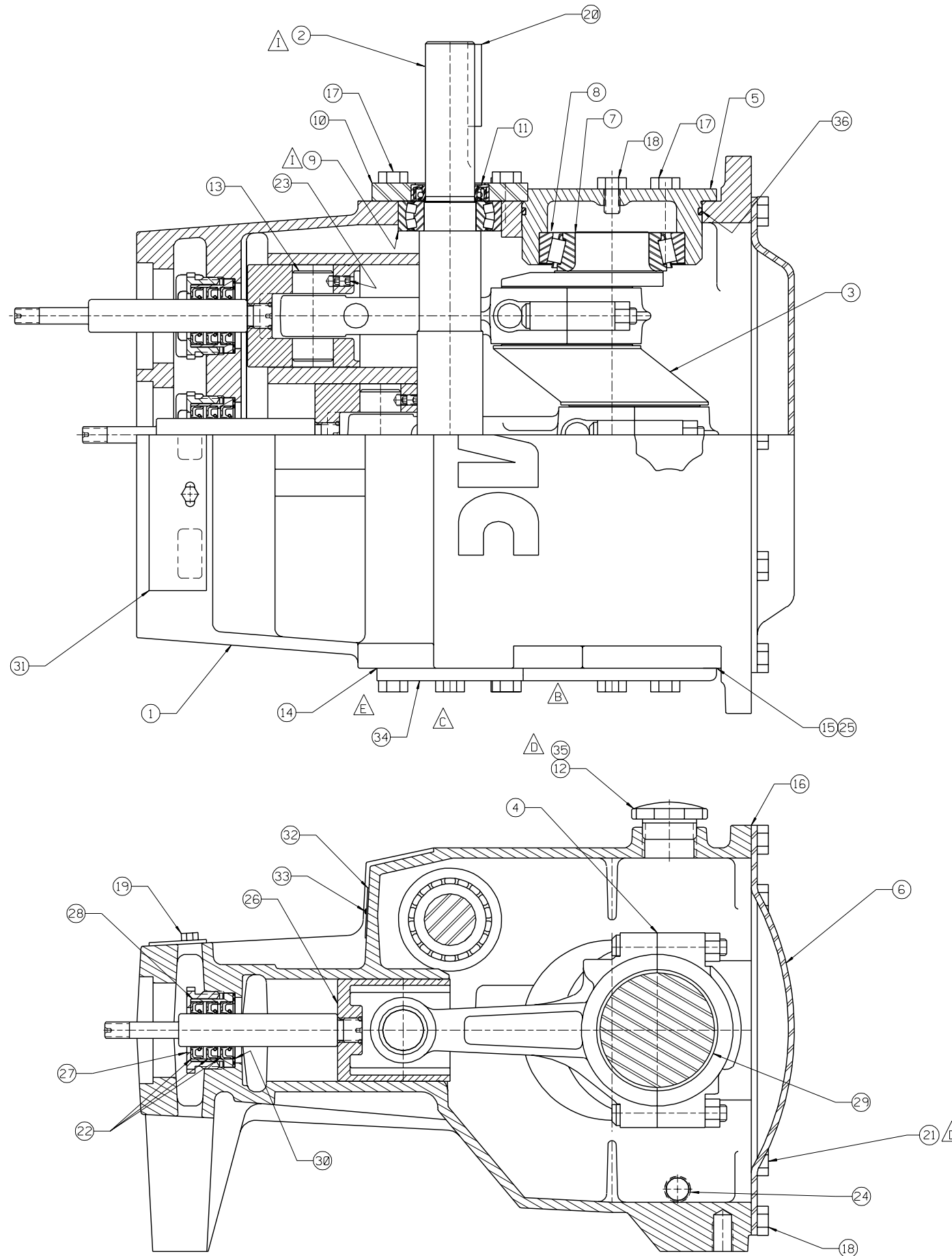
⑱ SEE NOTE 5

This drawing is the property of FMC Corporation and may not be used, reproduced, published, or disclosed to others without express authorization FMC Corp.		FMC Corporation Fluid Control Division 2825 W. Washington Box 1377 Stephenville, Texas 76481	
Unless Otherwise Specified: Remove all burrs & sharp corners .015 R. All diameters concentric unless .001 I.S.C.			
Angles ±1/2° .XX ±.015 .XXX ±.005 Finish 125 RMS All dimensions are in inches			
PUMP ASSEMBLY L1118D SC, W/2 1/2" NPT X 1 1/4" NPT FLUID END, CARBOX. NITRILE PISTON & 440 SST DISC VALVE ASSEMBLIES		DRAWN JKB 02-05-96 CDK. CHJ 02-12-96 APPD. RMC 02-28-96	SCALE: NONE SIZE: DRAWING NO. 5274991
REVISED FOR PRODUCTION ECN DATE		RELEASED FOR PRODUCTION ECN DATE	

REV	DESCRIPTION	DATE	BY
H	REV DBI	508468	SJK 06-05-01
G	REV BOM, ADD NOTE	508246	SJK 04-16-01
F	REV BOM	508262	SJK 01-27-00
E	REV BOM	5082157	BKM 05-08-98
D	REVISED NOTE 3	508718	BKM 01-13-98
C	REVISED & DIGITIZED	14154	JKB 02-05-96
REV	WAS	ECN	BY DATE

5274991

	ITEM	NO. REQD	PART NO.	PART NAME
M (2)				
(3)	(1)	1	5271955	POWER END ASSEMBLY:
	(2)	1	5268123	FLUID CYLINDER ASSEMBLY:
E	(3)	3	5268135	CYLINDER/PISTON GROUP:
	(4)	1	3269003	ATTACHING GROUP:
	(5)	1	1105558	COUPLING: 1¼" PIPE (NOT SHOWN)
	(6)	1	1105902	NIPPLE: 1¼" PIPE, 6" LG. (NOT SHOWN)
F	(7)	1	5262452	LIT KIT: (NOT SHOWN)
*	(8)	1	5257262	FLUID CYLINDER:
*	(9)	6	5255419	VALVE ASSEMBLIES:
*	(10)	3	1283530	VALVE COVER:
*	(11)	6	1248372	STUD: ½-13 UNC-2A X 4.0 LG.
*	(12)	3	5258151	VALVE COVER CLAMP:
*	(13)	3	1181154	O-RING: 2⅜" OD X .125 NOM., BUNA-N
*	(14)	2	1177205	CAPPLUG: INT. 44 (NOT SHOWN)
*	(15)	2	1177202	CAPPLUG: INT. 17S (NOT SHOWN)
*	(16)	6	1121511	HEX NUT: ½-13
G *	(17)	4	P501267	PLUG: ⅜" PIPE
*	(18)	3	1105121	PLUG: 2" PIPE
**	(19)	3	5260052	CUP:
**	(20)	3	A5016	PLUNGER NUT:
**	(21)	3	1101176	O-RING: ⅝" OD X ⅛" NOM., BUNA-N
**	(22)	3	1207289	WASHER:
**	(23)	3	5252520	CYLINDER: 2¼" ID
**	(24)	3	8309	NUT: ½-13
**	(25)	3	5257337	CUP HOLDER:
**	(26)	3	1284369	GASKET: FLUID CYLINDER
**	(27)	3	5257921	O-RING: 3.25 OD X ⅛" NOM., BUNA-N
**	(28)	3	1279676	GASKET: CYLINDER
***	(29)	3	3266108	CYLINDER HEAD CLAMP:
***	(30)	10	1121513	HEX NUT: ⅝-11
***	(31)	3	1177476	O-RING: 3⅜" OD X ⅛" NOM., BUNA-N
***	(32)	1	1187039	PETCOCK: (NOT SHOWN)
***	(33)	6	5251859	STUD: ⅝-11 UNC-2A X 12.25 LG.
***	(34)	3	3266137	CYLINDER COVER:
***	(35)	2	1248349	STUD: ⅝-11 UNC-2A X 9.50 LG.
	(36)	3	1105255	PLUG: 2" NPT HEX SOC



ITEM	NO. RECD	PART NO.	PART NAME
①	1	5257698	POWER FRAME:
②	1	P511596	PINION SHAFT:
③	1	1285094	ECCENTIRC GEAR ASSEMBLY:
④	3	5266814	CONNECTING ROD ASSEMBLY:
⑤	2	1248369	ECCENTRIC BEARING CAP:
⑥	1	P508969	BACKCOVER:
⑦	2	1177473	BEARING CONE: 2.25 ID, TIM #39581
⑧	2	1177474	BEARING CUP: 4.437 OD, TIM #39520
⑨	2	P511746	BEARING: SPHERICAL ROLLER
⑩	1	5257338	PINION BEARING CAP:
⑪	1	5257339	OIL SEAL: PINION SHAFT
⑫	1	A5054	OIL CAP:
⑬	3	A91014	WRIST PIN:
⑭	2	A91674	GASKET: PINION CAP
⑮	2	A91675	GASKET: BEARING CAP
⑯	1	P508966	GASKET: BACKCOVER
⑰	12	1100054	HEX HD. CAP SCREW: 1/2-13 X 1" LG.
⑱	20	1106980	HEX HD. CAP SCREW: 1/2-13 X 3/4" LG.
⑲	2	1100804	HEX HD. CAP SCREW: 1/4-20 X 1/2" LG.
⑳	1	1104349	KEY: 3/8" SQ. X 2 1/2" LG.
㉑	1	3269460	PLUG: PIPE, 1/8" NPT, POLY (NS)
㉒	9	1177489	OIL SEAL: PLUNGER ROD
㉓	6	1182554	SET SCREW: 5/16-18 X 5/16" LG., SOC. HD.
㉔	2	1187048	PLUG: 1/2" PIPE, MAG.
㉕	6	1252595	SHIM:
㉖	3	1252939	CROSSHEAD ASSEMBLY:
㉗	3	1266323	PACKING NUT:
㉘	3	3268369	SEAL HOLDER:
㉙	6	P506675	BEARING: CONNECTING ROD
㉚	3	3268418	GASKET: SEAL HOLDER
㉛	1	5260567	INSPECTION PLATE:
㉜	1	5277981	NAMEPLATE:
㉝	2	1187413	SELF-TAPPING SCREW: #4 X 3/16" LG.
㉞	1	P508916	PINION BEARING CAP: CLOSED
㉟	1	3269461	PLUG: PIPE, 1/4" NPT, POLY (NS)
㊱	2	3226710	O-RING: 5.50" OD X .12 NOM, BUNA-N

NOTES:
 1 TORQUE FASTENERS PER FMC ENGR SPEC AS-22
 ㉑ ㉟ ITEMS 21 AND 35 ARE TO BE INSTALLED AFTER TESTING, AND BEFORE CLEANING AND PAINTING.

I REV BOM & GRAPHICS		5009542	JMW	12-07-00	This drawing is the property of FMC Corporation, and may not be used, reproduced, published, or disclosed to others, without express authorization FMC Corp. Unless Otherwise Specified: Remove all burrs & sharp corners .005 R. All diameters concentric unless .001 I.D. Angles ±1/2° .XX ±.015 .XXX ±.005 Finish 125 RMS All dimensions are in inches	FMC Corporation Fluid Control Division 2825 W. Washington Box 1377 Stephenville, Texas 76481	POWER END ASSEMBLY F/L11, LH	
H REV BOM ITEM 29		5004581	SJK	05-17-00				
G REV BOM		5004403	BKM	03-08-00				
F REV BOM		5009597	BKM	06-24-99				
E REV BOM		5003413	BKM	05-05-99				
D REVISE BOM		5003383	BKM	09-22-97				
C REVISE BOM		13847	CHJ	10-17-95				
B REV CASE GRAPHICS		12529	SJK	01-13-94				
A REVISED & DIGITIZED		12261	CHJ	10-21-94				
REV WAS		ECN	BY	DATE				
RELEASED FOR PRODUCTION ECN _____ DATE _____					DRAWN CHJ 10-21-94 SCALE: NONE CKD. SL 10-27-94 SIZE DRAWING NO. APPD. RMC 10-29-94 D 5271955			

5271955

	ITEM	NO. REQD	PART NO.	PART NAME
	①	1	5257698	POWER FRAME:
△	②	1	P511596	PINION SHAFT:
	③	1	1285094	ECCENTIRC GEAR ASSEMBLY:
	④	3	5266814	CONNECTING ROD ASSEMBLY:
	⑤	2	1248369	ECCENTRIC BEARING CAP:
△	⑥	1	P508969	BACKCOVER:
	⑦	2	1177473	BEARING CONE: 2.25 ID, TIM #39581
	⑧	2	1177474	BEARING CUP: 4.437 OD, TIM #39520
△	⑨	2	P511746	BEARING: SPHERICAL ROLLER
	⑩	1	5257338	PINION BEARING CAP:
	⑪	1	5257339	OIL SEAL: PINION SHAFT
	⑫	1	A5054	OIL CAP:
	⑬	3	A91014	WRIST PIN:
	⑭	2	A91674	GASKET: PINION CAP
	⑮	2	A91675	GASKET: BEARING CAP
△	⑯	1	P508966	GASKET: BACKCOVER
△	⑰	12	1100054	HEX HD. CAP SCREW: 1/2-13 X 1" LG.
△	⑱	20	1106980	HEX HD. CAP SCREW: 1/2-13 X 3/4" LG.
	⑲	2	1100804	HEX HD. CAP SCREW: 1/4-20 X 1/2" LG.
	⑳	1	1104349	KEY: 3/8" SQ. X 2 1/2" LG.
△	㉑	1	3269460	PLUG: PIPE, 1/8" NPT, POLY (NS)
△	㉒	9	1177489	OIL SEAL: PLUNGER ROD
	㉓	6	1182554	SET SCREW: 5/16-18 X 5/16" LG., SOC. HD.
	㉔	2	1187048	PLUG: 1/2" PIPE, MAG.
	㉕	6	1252595	SHIM:
	㉖	3	1252939	CROSSHEAD ASSEMBLY:
	㉗	3	1266323	PACKING NUT:
△	㉘	3	3268369	SEAL HOLDER:
△	㉙	6	P506675	BEARING: CONNECTING ROD
△	㉚	3	3268418	GASKET: SEAL HOLDER
	㉛	1	5260567	INSPECTION PLATE:
	㉜	1	5277981	NAMEPLATE:
	㉝	2	1187413	SELF-TAPPING SCREW: #4 X 3/16" LG.
△	㉞	1	P508916	PINION BEARING CAP: CLOSED
△	㉟	1	3269461	PLUG: PIPE, 1/4" NPT, POLY (NS)
△	㊱	2	3226710	Ø-RING: 5.50" OD X .12 NOM, BUNA-N

NOTES:

1 TORQUE FASTENERS PER FMC ENGR SPEC AS-22

△ 2 ITEMS 21 AND 35 ARE TO BE INSTALLED AFTER TESTING, AND BEFORE CLEANING AND PAINTING.