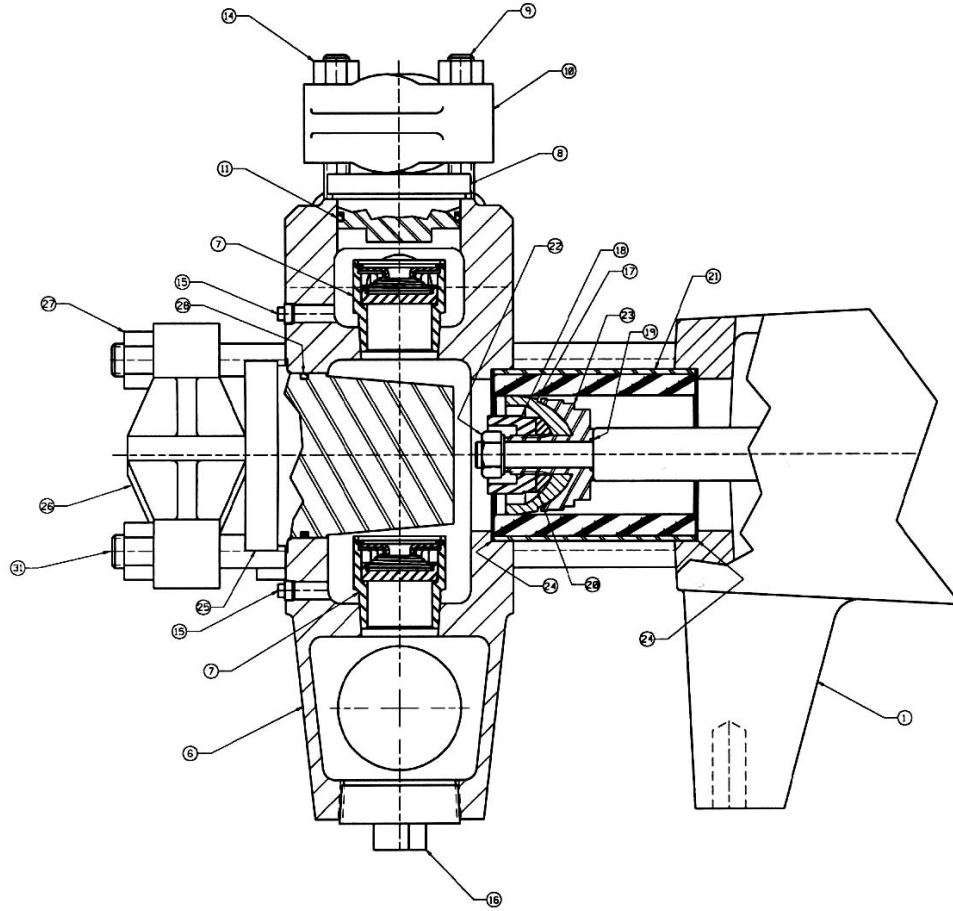


- THESE COMPONENTS ARE LOCATED IN THE FLUID CYLINDER ASSEMBLY, ITEM ②
- THESE COMPONENTS ARE LOCATED IN THE CYLINDER/PISTON GROUP, ITEM ③
- THESE COMPONENTS ARE LOCATED IN THE ATTACHING GROUP, ITEM ④



| ITEM | NO. REQD | PART NO. | PART NAME |
|------|----------|----------|---------------------------------------|
| ① | 1 | 5271987 | POWER END ASSEMBLY; DOUBLE EXTEND. |
| ② | 1 | 5268119 | FLUID CYLINDER ASSEMBLY; |
| ③ | 3 | 5268133 | CYLINDER/PISTON GROUP; |
| ④ | 1 | 5268138 | ATTACHING GROUP; |
| ⑤ | 1 | 5262452 | LIT KIT; |
| ⑥ | 1 | 5257262 | FLUID CYLINDER; |
| ⑦ | 6 | 5255419 | VALVE ASSEMBLIES; |
| ⑧ | 3 | 1283538 | VALVE COVER; |
| ⑨ | 6 | 1248372 | STUD; 1/2-13 UNC-2A X 4.8 LG. |
| ⑩ | 3 | 1247716 | VALVE COVER CLAMP; |
| ⑪ | 3 | 1181154 | O-RING; 2 3/8" OD X .125 NOM., BUNA-N |
| ⑫ | 2 | 1177285 | CAPPLUG; INT. 44 (NOT SHOWN) |
| ⑬ | 2 | 1177282 | CAPPLUG; INT. 175 (NOT SHOWN) |
| ⑭ | 6 | 1121511 | HEX NUT; 1/2-13 |
| ⑮ | 4 | 1109973 | PLUG; 1/2" PIPE |
| ⑯ | 3 | 1105121 | PLUG; 2" PIPE |
| ⑰ | 3 | 4268N | PISTON; 2 3/4" DIA, FABRIC & NEOPRENE |
| ⑱ | 3 | 45816 | PLUNGER NUT; |
| ⑲ | 3 | 1101176 | O-RING; 3/8" OD X 1/16" NOM., BUNA-N |
| ⑳ | 3 | 1216753 | WASHER; |
| ㉑ | 3 | 1267586 | CYLINDER; 2 3/4" ID |
| ㉒ | 3 | 8389 | SPECIAL HEX NUT; 1/2-13 |
| ㉓ | 3 | 491663 | CUP HOLDER; |
| ㉔ | 6 | 1279676 | GASKET; CYLINDER |
| ㉕ | 3 | 1283531 | CYLINDER COVER; |
| ㉖ | 3 | 488392 | CYLINDER HEAD CLAMP; |
| ㉗ | 8 | 1121513 | HEX NUT; 3/8-11 |
| ㉘ | 3 | 1177476 | O-RING; 3/8" OD X 1/16" NOM., BUNA-N |
| ㉙ | 1 | 1187839 | PETCOCK; (NOT SHOWN) |
| ㉚ | 2 | 1248349 | STUD; 3/8-11 UNC-2A X 9.58 LG. (INS) |
| ㉛ | 6 | 5251859 | STUD; 3/8-11 UNC-2A X 12.25 LG. |

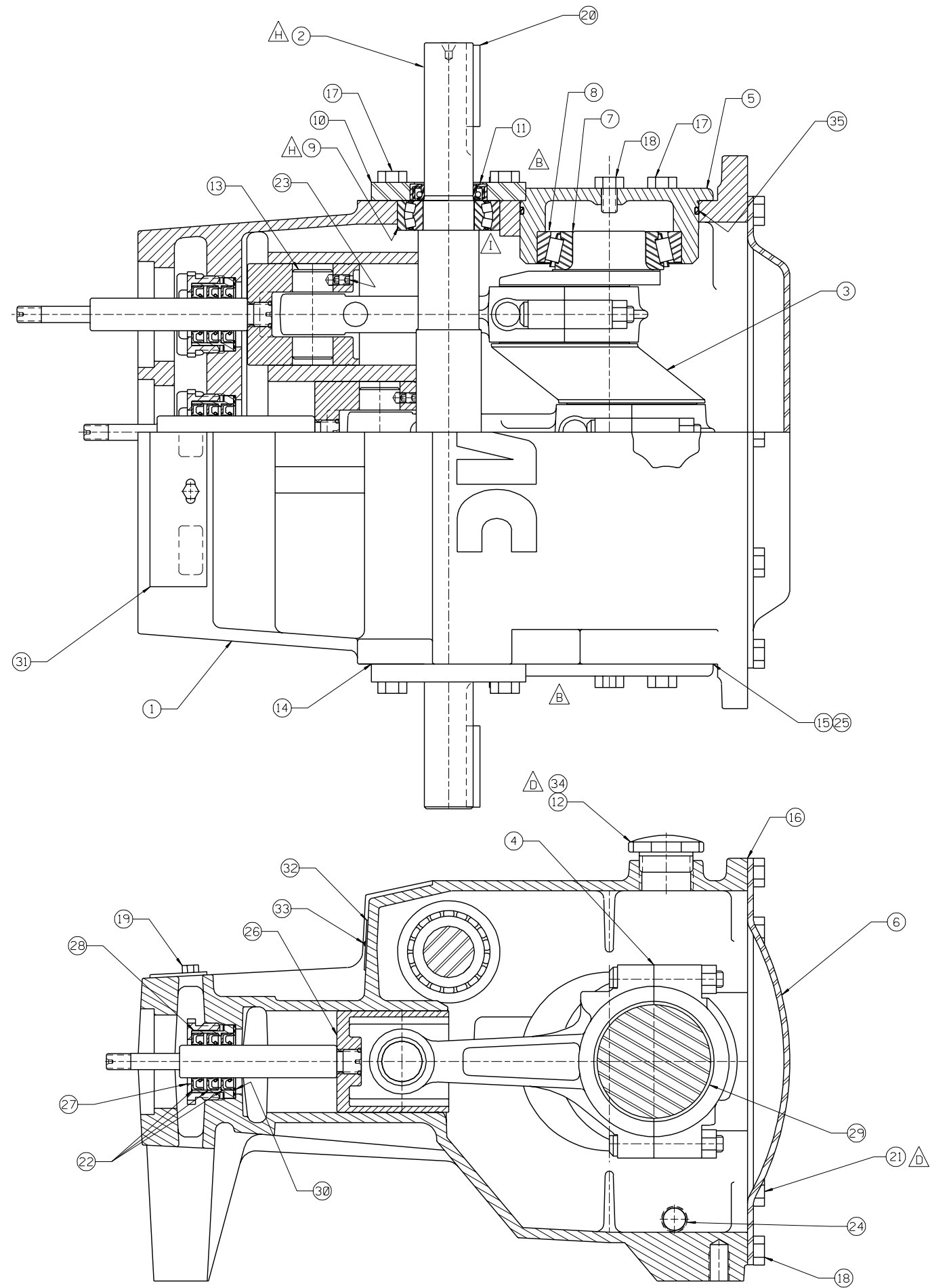
NOTES:

- 1 TORQUE FASTENERS PER FMC ENGR SPEC AS-22
- 2 TEST PUMP PER FMC ENGR SPEC AS-15
- 3 STAMP NAMEPLATE PER FMC ENGR SPEC AS-21
- 4 PAINT PUMP PER FMC ENGR SPEC CP-28

| | | | |
|--|-----------------------------|---|--|
| <small>The drawings on the drawings of FMC Corporation, and any part, for which reproduction, distribution, or modification is prohibited, without written consent of FMC Corporation, is hereby prohibited.</small> | | | |
| <small>Unless otherwise specified, all dimensions are in inches and fractions thereof.</small> | | PUMP ASSEMBLY L11220, W/2 3/4" NPT X 1 1/4" NPT FLUID END, FABRIC & NEOPRENE PISTON, 440 SST DISC VALVE ASSEMBLIES & DOUBLE EXTENDED SMART ON POWER END | |
| L K REV | REV ECH REVISIONS MAG | DATE 83-22-79 | DRAWN CHU 10-18-93 SCALE: NONE CVD SL 11-82-95 APPD. RING 11-14-95 D 1283527 |

1283527

| ITEM | NO. REQD | PART NO. | PART NAME | |
|------|----------|----------|------------------------------------|---------------------------------------|
| ② | | | | |
| ③ | | | | |
| ① | 1 | 5271957 | POWER END ASSEMBLY: DOUBLE EXTEND. | |
| ② | 1 | 5268119 | FLUID CYLINDER ASSEMBLY: | |
| ③ | 3 | 5268133 | CYLINDER/PISTON GROUP: | |
| ④ | 1 | 5268138 | ATTACHING GROUP: | |
| △ | ⑤ | 1 | 5262452 | LIT KIT: |
| * | ⑥ | 1 | 5257262 | FLUID CYLINDER: |
| * | ⑦ | 6 | 5255419 | VALVE ASSEMBLIES: |
| * | ⑧ | 3 | 1283538 | VALVE COVER: |
| * | ⑨ | 6 | 1248372 | STUD: 1/2-13 UNC-2A X 4.0 LG. |
| * | ⑩ | 3 | 1247716 | VALVE COVER CLAMP: |
| * | ⑪ | 3 | 1181154 | O-RING: 2 3/8" OD X .125 NOM., BUNA-N |
| * | ⑫ | 2 | 1177205 | CAPLUG: INT. 44 (NOT SHOWN) |
| * | ⑬ | 2 | 1177202 | CAPLUG: INT. 175 (NOT SHOWN) |
| * | ⑭ | 6 | 1121511 | HEX NUT: 1/2-13 |
| * | ⑮ | 4 | 1109973 | PLUG: 1/8" PIPE |
| * | ⑯ | 3 | 1105121 | PLUG: 2" PIPE |
| ** | ⑰ | 3 | A268N | PISTON: 2 3/4" DIA, FABRIC & NEOPRENE |
| ** | ⑱ | 3 | A5016 | PLUNGER NUT: |
| ** | ⑲ | 3 | 1101176 | O-RING: 5/8" OD X 1/16" NOM., BUNA-N |
| ** | ⑳ | 3 | 1216753 | WASHER: |
| ** | ㉑ | 3 | 1267586 | CYLINDER: 2 3/4" ID |
| ** | ㉒ | 3 | 8389 | SPECIAL HEX NUT: 1/2-13 |
| ** | ㉓ | 3 | A91663 | CUP HOLDER: |
| ** | ㉔ | 6 | 1279676 | GASKET: CYLINDER |
| ** | ㉕ | 3 | 1283531 | CYLINDER COVER: |
| *** | ㉖ | 3 | A80392 | CYLINDER HEAD CLAMP: |
| *** | ㉗ | 8 | 1121513 | HEX NUT: 5/8-11 |
| *** | ㉘ | 3 | 1177476 | O-RING: 3 1/8" OD X 1/8" NOM., BUNA-N |
| *** | ㉙ | 1 | 1187839 | PETCOCK: (NOT SHOWN) |
| *** | ㉚ | 2 | 1248349 | STUD: 5/8-11 UNC-2A X 9.50 LG. (NS) |
| *** | ㉛ | 6 | 5251859 | STUD: 5/8-11 UNC-2A X 12.25 LG. |



| ITEM | NO. RECD | PART NO. | PART NAME |
|------|----------|----------|--|
| ① | 1 | 5257698 | POWER FRAME: |
| ② | 1 | P513120 | PINION SHAFT: |
| ③ | 1 | 1285094 | ECCENTIRC GEAR ASSEMBLY: |
| ④ | 3 | 5266814 | CONNECTING ROD ASSEMBLY: |
| ⑤ | 2 | 1248369 | ECCENTRIC BEARING CAP: |
| ⑥ | 1 | P508969 | BACKCOVER: |
| ⑦ | 2 | 1177473 | BEARING CONE: 2.25 ID, TIM #39581 |
| ⑧ | 2 | 1177474 | BEARING CUP: 4.437 OD, TIM #39520 |
| ⑨ | 2 | P511746 | BEARING: SPHERICAL ROLLER |
| ⑩ | 2 | 5257338 | PINION BEARING CAP: |
| ⑪ | 2 | 5257339 | OIL SEAL: PINION SHAFT |
| ⑫ | 1 | A5054 | OIL CAP: |
| ⑬ | 3 | A91014 | WRIST PIN: |
| ⑭ | 2 | A91674 | GASKET: PINION CAP |
| ⑮ | 2 | A91675 | GASKET: BEARING CAP |
| ⑯ | 1 | P508966 | GASKET: BACKCOVER |
| ⑰ | 10 | 1100054 | HEX HD. CAP SCREW: 1/2-13 X 1" LG. |
| ⑱ | 22 | 1106980 | HEX HD. CAP SCREW: 1/2-13 X 3/4" LG. |
| ⑲ | 2 | 1100804 | HEX HD. CAP SCREW: 1/4-20 X 1/2" LG. |
| ⑳ | 2 | 1104349 | KEY: 3/8" SQ. X 2 1/2" LG. |
| ㉑ | 1 | 3269460 | PLUG: PIPE, 1/8" NPT, POLY (NS) |
| ㉒ | 9 | 1177489 | OIL SEAL: PLUNGER ROD |
| ㉓ | 6 | 1182554 | SET SCREW: 5/16-18 X 5/16" LG., SOC. HD. |
| ㉔ | 2 | 1187048 | PLUG: 1/2" PIPE, MAG. |
| ㉕ | 6 | 1252595 | SHIM: |
| ㉖ | 3 | 1252939 | CROSSHEAD ASSEMBLY: |
| ㉗ | 3 | 1266323 | PACKING NUT: |
| ㉘ | 3 | 3268369 | SEAL HOLDER: |
| ㉙ | 6 | P506675 | BEARING: CONNECTING ROD |
| ㉚ | 3 | 3268418 | GASKET: SEAL HOLDER |
| ㉛ | 1 | 5260567 | INSPECTION PLATE: |
| ㉜ | 1 | 5277981 | NAMEPLATE: |
| ㉝ | 2 | 1187413 | SELF-TAPPING SCREW: #4 X 3/16" LG. |
| ㉞ | 1 | 3269461 | PLUG: PIPE, 1/4" NPT POLY (NS) |
| ㉟ | 2 | 3226710 | O-RING: 5.50 " OD X .12, BUNA-N |

NOTES:
 1 TORQUE FASTENERS PER FMC ENGR SPEC AS-22
 2 ITEMS 21 AND 34 TO BE INSTALLED AFTER TESTING, AND BEFORE CLEANING AND PAINTING

| | | | | | | | | |
|-------------------------------------|--|---------|-----|----------|---|---|--|--|
| I REVISE GRAPHICS | | 508932 | JMW | 02-08-01 | This drawing is the property of FMC Corporation, and may not be used, reproduced, published, or disclosed to others, without express authorization FMC Corp. Unless Otherwise Specified: Remove all burrs & sharp corners .005 R. All diameters concentric unless .001 I.D. Angles ±1/2° .XX ±.015 .XXX ±.005 Finish 125 RMS All dimensions are in inches | FMC Corporation Fluid Control Division 2825 W. Washington Box 1377 Stephenville, Texas 76481 | POWER END ASSEMBLY F/L11, DOUBLE EXTENDED | |
| H REV BOM & GRAPHICS | | 508542 | JMW | 12-07-00 | | | | |
| G REV BOM ITEM 29 | | 508489 | SJK | 05-17-00 | | | | |
| F REV BOM | | 508957 | BKM | 06-24-99 | | | | |
| E REV BOM | | 5083423 | BKM | 05-06-99 | | | | |
| D REVISED BOM | | 508383 | BKM | 09-22-97 | | | | |
| C REVISE BOM | | 13847 | CHJ | 10-17-95 | | | | |
| B REV CASE GRAPHICS | | 12529 | SJK | 01-13-95 | | | | |
| A REVISED & DIGITIZED | | 12261 | CHJ | 10-21-94 | | | | |
| REV WAS | | ECN | BY | DATE | | | | |
| RELEASED FOR PRODUCTION ECN DATE | | | | | DRAWN CHJ 10-21-94 CKD. SL 10-27-94 APPD. RMC 10-29-94 | SCALE: NONE SIZE: DRAWING NO. D 5271957 | | |

5271957

| | ITEM | NO. REQD | PART NO. | PART NAME |
|---|------|----------|----------|--|
| | | | | |
| | ① | 1 | 5257698 | POWER FRAME: |
| H | ② | 1 | P513120 | PINION SHAFT: |
| | ③ | 1 | 1285094 | ECCENTIRC GEAR ASSEMBLY: |
| | ④ | 3 | 5266814 | CONNECTING ROD ASSEMBLY: |
| | ⑤ | 2 | 1248369 | ECCENTRIC BEARING CAP: |
| E | ⑥ | 1 | P508969 | BACKCOVER: |
| | ⑦ | 2 | 1177473 | BEARING CONE: 2.25 ID, TIM #39581 |
| | ⑧ | 2 | 1177474 | BEARING CUP: 4.437 OD, TIM #39520 |
| H | ⑨ | 2 | P511746 | BEARING: SPHERICAL ROLLER |
| | ⑩ | 2 | 5257338 | PINION BEARING CAP: |
| | ⑪ | 2 | 5257339 | OIL SEAL: PINION SHAFT |
| | ⑫ | 1 | A5054 | OIL CAP: |
| | ⑬ | 3 | A91014 | WRIST PIN: |
| | ⑭ | 2 | A91674 | GASKET: PINION CAP |
| | ⑮ | 2 | A91675 | GASKET: BEARING CAP |
| E | ⑯ | 1 | P508966 | GASKET: BACKCOVER |
| E | ⑰ | 10 | 1100054 | HEX HD. CAP SCREW: 1/2-13 X 1" LG. |
| E | ⑱ | 22 | 1106980 | HEX HD. CAP SCREW: 1/2-13 X 3/4" LG. |
| | ⑲ | 2 | 1100804 | HEX HD. CAP SCREW: 1/4-20 X 1/2" LG. |
| | ⑳ | 2 | 1104349 | KEY: 3/8" SQ. X 2 1/2" LG. |
| D | ㉑ | 1 | 3269460 | PLUG: PIPE, 1/8" NPT, POLY (NS) |
| C | ㉒ | 9 | 1177489 | OIL SEAL: PLUNGER ROD |
| | ㉓ | 6 | 1182554 | SET SCREW: 5/16-18 X 5/16" LG., SOC. HD. |
| | ㉔ | 2 | 1187048 | PLUG: 1/2" PIPE, MAG. |
| | ㉕ | 6 | 1252595 | SHIM: |
| | ㉖ | 3 | 1252939 | CROSSHEAD ASSEMBLY: |
| | ㉗ | 3 | 1266323 | PACKING NUT: |
| C | ㉘ | 3 | 3268369 | SEAL HOLDER: |
| G | ㉙ | 6 | P506675 | BEARING: CONNECTING ROD |
| C | ㉚ | 3 | 3268418 | GASKET: SEAL HOLDER |
| | ㉛ | 1 | 5260567 | INSPECTION PLATE: |
| | ㉜ | 1 | 5277981 | NAMEPLATE: |
| | ㉝ | 2 | 1187413 | SELF-TAPPING SCREW: #4 X 3/16" LG. |
| D | ㉞ | 1 | 3269461 | PLUG: PIPE, 1 1/4" NPT POLY (NS) |
| F | ㉟ | 2 | 3226710 | O-RING: 5.50 " OD X .12, BUNA-N |