

\* THESE COMPONENTS ARE LOCATED IN THE VALVE CHAMBER ASSEMBLY, ITEM #②  
 \*\* THESE COMPONENTS ARE LOCATED IN THE UV CYLINDER / PISTON GROUP, ITEM #③  
 \*\*\* THESE COMPONENTS ARE LOCATED IN THE ATTACHING GROUP, ITEM #④

ITEM	NO. RECD	PART NO.	PART NAME
①	1	3268138	POWER END ASSY
②	1	5268120	VALVE CHAM ASSY
③	3	3267198	UV CYL/PIST GRP
④	1	3266107	ATTACHING GRP
⑤	1	3267689	MANUAL
* ⑥	1	5257262	FLUID CYLINDER:
* ⑦	6	1283896	VALVE SEAT: BALL, 475 SERIES
* ⑧	3	1283530	VALVE COVER:
* ⑨	6	1248372	STUD: 1/2-13, UNC-2A, 4" LG
* ⑩	3	1247716	CASTING CLAMP:
* ⑪	6	1187042	BALL: 1-3/16, 440 SST
* ⑫	3	1181154	O-RING: 2-3/8 OD X .125 NOM, BUNA-N
* ⑬	2	1177205	CAPLUG: INT 44 (NOT SHOWN)
* ⑭	2	1177202	CAPLUG: INT 17S (NOT SHOWN)
* ⑮	6	1121511	HEX NUT: 1/2-13
* ⑯	4	1109973	PIPE PLUG: 1/8"
* ⑰	3	1105121	PIPE PLUG: 2"
** ⑱	3	3266137	CYLINDER COVER:
** ⑲	3	320276	STOP NUT: 1/2-13 SST
** ⑳	3	5257921	O-RING: 3.25 OD X .06 NOM, BUNA-N
** ㉑	3	1284369	RING SEAL CYLINDER:
** ㉒	3	1279676	CYLINDER GASKET:
** ㉓	3	3267191	SEAL HOLDER:
** ㉔	3	3267149	CERAMIC CYLINDER:
** ㉕	3	3267192	SEAL RETAINER:
** ㉖	3	1101176	O-RING: 5/8 OD X .06 NOM, BUNA-N
** ㉗	3	3267197	PACKING ASSEMBLY:
*** ㉘	6	3266109	STUD: 5/8-11, UNC X 13.75LG
*** ㉙	2	5257378	STUD: 5/8-11, UNC (NOT SHOWN)
*** ㉚	1	5262811	SIGHT GAGE: (NOT SHOWN)
*** ㉛	3	1177476	O-RING: 3 1/8 OD X 1/8 NOM, BUNA-N
*** ㉜	8	1121513	HEX NUT: 5/8-11
*** ㉝	3	3266108	CYLINDER CLAMP COVER:

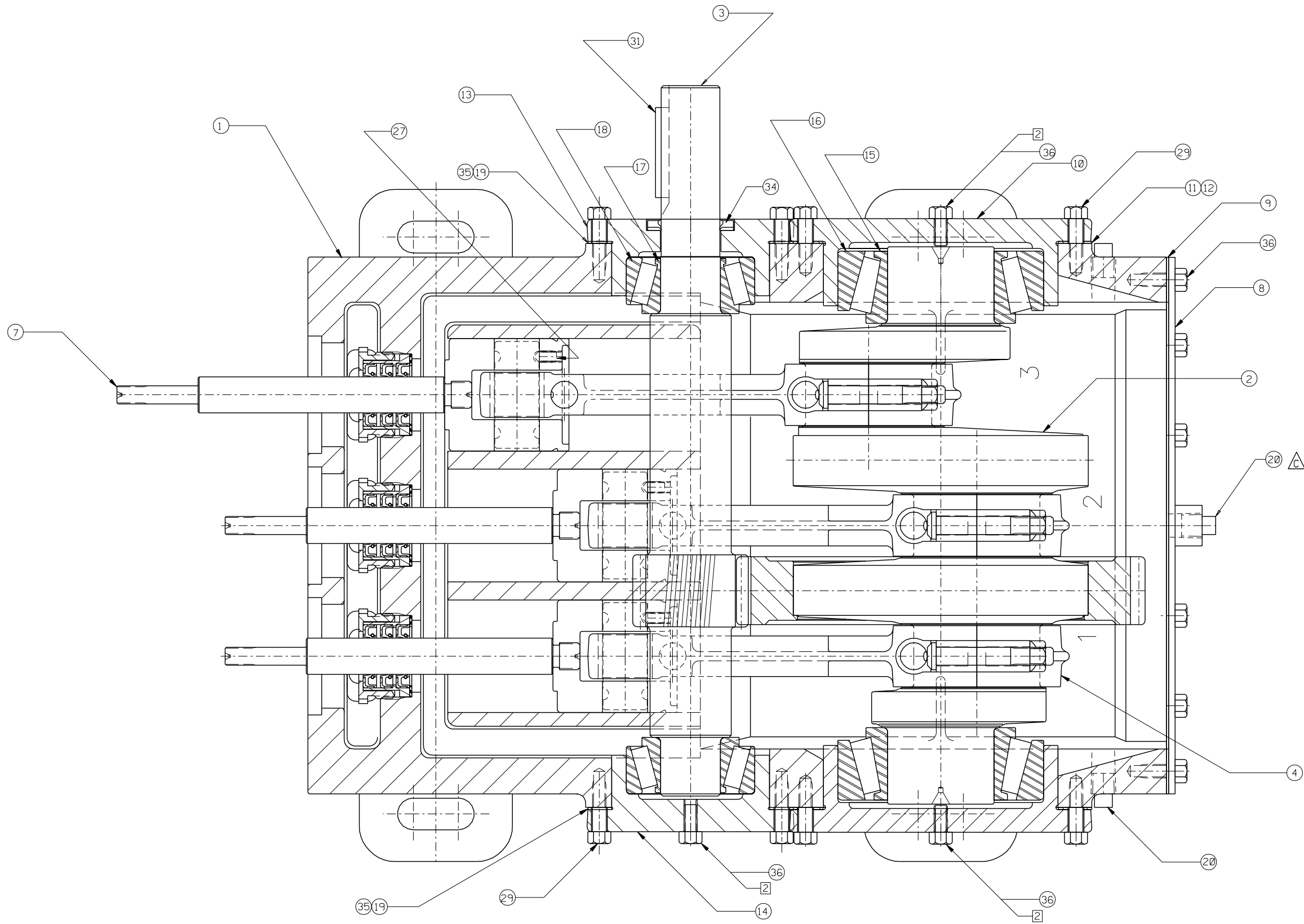
NOTES:  
 1 TORQUE FASTENERS PER FMC ENGR SPEC AS-22  
 2 TEST PUMP PER FMC ENGR SPEC AS-15, AT 2500 PSI, 1475 RPM FOR 1 HOUR  
 3 STAMP NAMEPLATE PER ENGR SPEC AS-21  
 4 PAINT PUMP PER FMC ENGR SPEC CP-20

This drawing is the property of FMC Corporation, and may not be used, reproduced, published, or disclosed to others without express authorization FMC Corp.		FMC Corporation Fluid Control Division 2825 W. Washington Box 1377 Stephenville, Texas 76481	
Unless Otherwise Specified: Remove all burrs & sharp corners .015 R. All diameters concentric unless .001 I.S. Angles ±1/2° .XX ±.015 .XXX ±.005 Finish 125 RMS All dimensions are in inches		PUMP ASSEMBLY L1616B, LH, W/2 1/2" NPT X 1 1/4" NPT FLUID END, UV PACKING PISTON & 440 SST DISC VALVE ASSEMBLIES	
RELEASED FOR PRODUCTION ECN DATE 5001449 10-16-97	DRAWN TT CKD. SJK APPD. GG	DATE 10-14-97 SIZE 10-15-97 SCALE: NONE	DRAWING NO. P503598

A	NEW ISSUE	TT	10-14-97
REV	WAS	ECN BY	DATE

P503598

	ITEM	NO. REQD	PART NO.	PART NAME
	①	1	3268138	POWER END ASSY
	②	1	5268120	VALVE CHAM ASSY
	③	3	3267198	UV CYL/PIST GRP
	④	1	3266107	ATTACHING GRP
	⑤	1	3267689	MANUAL
*	⑥	1	5257262	FLUID CYLINDER:
*	⑦	6	1283896	VALVE SEAT: BALL, 475 SERIES
*	⑧	3	1283530	VALVE COVER:
*	⑨	6	1248372	STUD: 1/2-13, UNC-2A, 4" LG
*	⑩	3	1247716	CASTING CLAMP:
*	⑪	6	1187042	BALL: 1-3/16, 440 SST
*	⑫	3	1181154	O-RING: 2-3/8 OD X .125 NOM, BUNA-N
*	⑬	2	1177205	CAPLUG: INT 44 (NOT SHOWN)
*	⑭	2	1177202	CAPLUG: INT 17S (NOT SHOWN)
*	⑮	6	1121511	HEX NUT: 1/2-13
*	⑯	4	1109973	PIPE PLUG: 1/8"
*	⑰	3	1105121	PIPE PLUG: 2"
**	⑱	3	3266137	CYLINDER COVER:
**	⑲	3	320276	STOP NUT: 1/2-13 SST
**	⑳	3	5257921	O-RING: 3.25 OD X .06 NOM, BUNA-N
**	㉑	3	1284369	RING SEAL CYLINDER:
**	㉒	3	1279676	CYLINDER GASKET:
**	㉓	3	3267191	SEAL HOLDER:
**	㉔	3	3267149	CERAMIC CYLINDER:
**	㉕	3	3267192	SEAL RETAINER:
**	㉖	3	1101176	O-RING: 5/8 OD X .06 NOM, BUNA-N
**	㉗	3	3267197	PACKING ASSEMBLY:
***	㉘	6	3266109	STUD: 5/8-11, UNC X 13.75LG
***	㉙	2	5257378	STUD: 5/8-11, UNC (NOT SHOWN)
***	㉚	1	5262811	SIGHT GAGE: (NOT SHOWN)
***	㉛	3	1177476	O-RING: 3 1/8 OD X 1/8 NOM, BUNA-N
***	㉜	8	1121513	HEX NUT: 5/8-11
***	㉝	3	3266108	CYLINDER CLAMP COVER:



ITEM NO	NO REQ'D	PART NUMBER	PART NAME
37	1	3269461	PLUG 1- 1/4" NPT (NS)
** 36	23	1100068	HHCS 3/8-16 X 3/4
** 35	8	3266090	SHIM PINION HOUSING
** 34	1	1187011	OIL SEAL 1 5/8 X 2.441
** 33	2	1187413	TAP SC #4 X 3/16 RH
** 32	1	5277981	NAMEPLATE
** 31	1	1104349	KEY 3/8 SQ X 2.5 PLN
** 30	1	1177196	CAPLUG
** 29	20	1100043	HEX HD CP SCW 3/8-16
** 28	2	1100804	HEX HD CP SCW 1/4-20
** 27	6	1182554	SKTHD ST SCW 5/16-18
** 26	1	A5054	OIL CAP
A 25	3	3268369	SEAL HOLDER
A 24	3	1266323	NUT PKG WIPER SEAL
A 23	9	1177489	OIL SEAL
A 22	3	3268418	GASKET: SEAL HOLDER
A 21	1	5260567	INSPECTION PLATE
C 20	5	1187048	PLUG 1/2 PIPE
** 19	2	3266101	GKT PINION HOUSING
** 18	2	3266100	CUP PINION TIM#4335
** 17	2	3266099	CONE PINION TIM#4395
** 16	2	320312	BEARING CUP
** 15	2	320313	BEARING CONE TS
** 14	1	3266098	PINION HSG W/O HOLE
** 13	1	3266096	PINION HSG W/HOLE
** 12	6	3266095	SHIM BEARING HOUS
** 11	2	3266094	GKT BEARING HOUSING
** 10	2	3266092	BEARING HOUSING
9	1	3266091	BACK COVER GASKET
8	1	3266089	COVER PLATE WELD
7	3	3266087	CROSSHEAD ASSY
6	3	A91014	WRIST PIN
5	6	1284709	BEARING CONN ROD
4	3	3266085	CONNECTING ROD
3	1	3266084	PINION SHAFT
2	1	3266080	CRANK & GEAR ASSY
1	1	3268136	POWER FRAME

\*\* NOT SHOWN

- NOTES:
- 1 TORQUE FASTENERS PER FMC ENGR SPEC AS-22
  - 2 APPLY LOCTITE 290 TO ITEM #36 (3 PLACES) AND TORQUE TO 15 FT-LBS
  - 3 ITEMS 37 TO BE INSTALLED AFTER TESTING, BEFORE CLEANING AND PAINTING

This drawing is the property of FMC Corporation and may not be used, reproduced, published, or disclosed to others without express authorization FMC Corp.		FMC Corporation Fluid Control Division 2825 W. Washington Box 1377 Stephenville, Texas 76481	
Unless Otherwise Specified: Remove all burrs & sharp corners .015 R. All diameters concentric unless otherwise noted. Angles ±1/2° .XX ±.015 .XXX ±.005 Finish 125 RMS All dimensions are in inches		POWER END ASSEMBLY L16, LH	
C REVISED BOM 500366 BKM 09-17-97 B REV ITEM 22 14172 DB 02-13-96 A REV ITEMS 23, 24 & 26 13079 CHJ 10-13-95 REV WAS ECN BY DATE		RELEASED FOR PRODUCTION ECN DATE 13539 07-13 DRAWN SJK 07-10-95 SCALE: 1.5 : 1 CKD. CHJ 07-11-95 SIZE DRAWING NO. APPD. RMC 07-12-95 D 3268138	

3268138

△	③7	1	3269461	PLUG 1- 1/4" NPT (NS)
* *	③6	23	1100068	HHCS 3/8-16 X 3/4
* *	③5	8	3266090	SHIM PINION HOUSING
* *	③4	1	1187011	OIL SEAL 1 5/8 X 2.441
	③3	2	1187413	TAP SC #4 X 3/16 RH
	③2	1	5277981	NAMEPLATE
* *	③1	1	1104349	KEY 3/8 SQ X 2.5 PLN
	③0	1	1177196	CAPLUG
* *	②9	20	1100043	HEX HD CP SCW 3/8-16
	②8	2	1100804	HEX HD CP SCW 1/4-20
* *	②7	6	1182554	SKTHD ST SCW 5/16-18
	②6	1	A5054	OIL CAP
△	②5	3	3268369	SEAL HOLDER
	②4	3	1266323	NUT PKG WIPER SEAL
△	②3	9	1177489	OIL SEAL
△	②2	3	3268418	GASKET: SEAL HOLDER
	②1	1	5260567	INSPECTION PLATE
△	②0	5	1187048	PLUG 1/2 PIPE
* *	①9	2	3266101	GKT PINION HOUSING
* *	①8	2	3266100	CUP PINION TIM#4335
* *	①7	2	3266099	CONE PINION TIM#4395
* *	①6	2	320312	BEARING CUP
* *	①5	2	320313	BEARING CONE TS
* *	①4	1	3266098	PINION HSG W/O HOLE
* *	①3	1	3266096	PINION HSG W/HOLE
* *	①2	6	3266095	SHIIM BEARING HOUS
* *	①1	2	3266094	GKT BEARING HOUSING
* *	①0	2	3266092	BEARING HOUSING
	⑨	1	3266091	BACK COVER GASKET
	⑧	1	3266089	COVER PLATE WELD
	⑦	3	3266087	CROSSHEAD ASSY
	⑥	3	A91014	WRIST PIN
	⑤	6	1284709	BEARING CONN ROD
	④	3	3266085	CONNECTING ROD
	③	1	3266084	PINION SHAFT
	②	1	3266080	CRANK & GEAR ASSY
	①	1	3268136	POWER FRAME
	ITEM NO	NO REQ'D	PART NUMBER	PART NAME