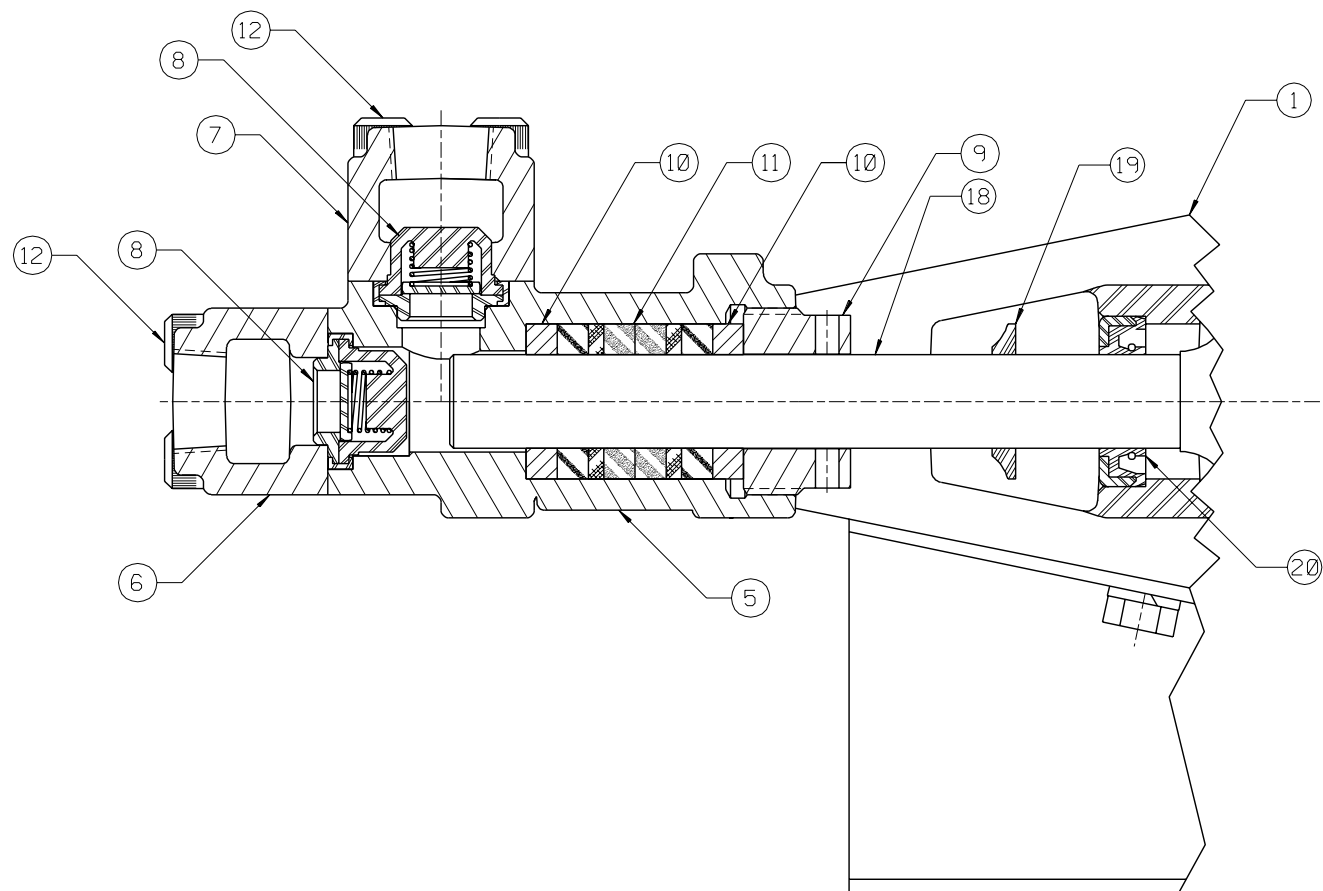


\* THESE COMPONENTS ARE LOCATED IN THE FLUID END ASSEMBLY, ITEM ②  
 \*\* THESE COMPONENTS ARE LOCATED IN THE ATTACHING GROUP, ITEM ③  
 \*\*\* THESE COMPONENTS ARE LOCATED IN THE POWER END ASSEMBLY, ITEM ① <sup>△</sup>B



ITEM	NO. REQD	PART NO.	PART NAME
①	1	P510080	POWER END ASSEMBLY:
②	1	P504238	FLUID END ASSEMBLY:
③	1	5267835	ATTACHING GROUP:
④	1	5266224	LIT KIT:
* ⑤	1	P504240	VALVE CHAMBER: DUCTILE IRON
* ⑥	1	5263322	SUCTION CHAMBER: DUCTILE IRON
* ⑦	1	5263323	DISCHARGE CHAMBER: DUCTILE IRON
* ⑧	6	5269970	VALVE ASSEMBLY: DISC, VITON
* ⑨	3	P504242	ADJUSTING NUT: AL BRNZ
* ⑩	6	P504244	THROAT BUSHING/FOLLOWER: AL BRNZ
* ⑪	3	P504243	PACKING SET: 249/686 BRAIDED, HT
* ⑫	8	1112293	SOC. HD. CAP SCREW: 5/16-18 X 1 1/2" LG
* ⑬	4	1177207	CAPLUG: EXT 8X (NOT SHOWN)
** ⑭	2	1121509	HEX NUT: 3/8"-16 FIN C/Z (NOT SHOWN)
** ⑮	2	5257487	ALIGN BUSHING: (NOT SHOWN)
** ⑯	2	5257607	STUD: 3/8"-16 X 2" LG (NOT SHOWN)
** ⑰	2	1100243	LOCK WASHER: (NOT SHOWN)
△ *** ⑱	3	P510074	PLUNGER & CROSSHEAD ASSEMBLY:
*** ⑲	3	5257373	BARRIER WASHER:
*** ⑳	3	5257490	OIL SEAL: CROSSHEAD

NOTES:

- 1 STAMP NAMEPLATE PER FMC ENGR SPEC AS-21
- 2 TORQUE FASTENERS PER FMC ENGR SPEC AS-22
- 3 TEST PUMP PER FMC ENGR SPEC AS-15
- 4 PAINT PUMP PER FMC ENGR SPEC CP-20

This drawing is the property of FMC Corporation, and may not be used, reproduced, published, or disclosed to others, without express authorization FMC Corp.

**FMC** FMC Corporation  
 Fluid Control Division  
 2825 W. Washington Box 1377  
 Stephenville, Texas 76401

Unless Otherwise Specified:  
 Remove all burrs & sharp corners .015 R.  
 All diameters concentric within .010 T.L.R.  
 Angles ±1/2°  
 .X ±.1  
 .XX ±.015  
 .XXX ±.005  
 Finish 125 RMS  
 All dimensions are in inches

PUMP ASSEMBLY  
 M0406 DI HT, W/1/2" NPT X 1/2" NPT FLUID END,  
 TUNGSTEN PLGR, 249/686 BRAIDED PKG &  
 450 SST DISC VALVE ASSYS, W/VITON SEAL

B	REV PLUNGERS	5003948	SJK	10-26-99
A	NEW ISSUE	✓	SJK	11-26-97
REV	WAS	ECN	BY	DATE

RELEASED FOR PRODUCTION	DATE
ECN	5001594
DATE	12-08-97

DRAWN	SJK	11-26-97	SCALE:	NONE
CKD.	MLP	11-26-97	SIZE	DRAWING NO.
APPD.	GG	12-04-97	C	P504237

P504237