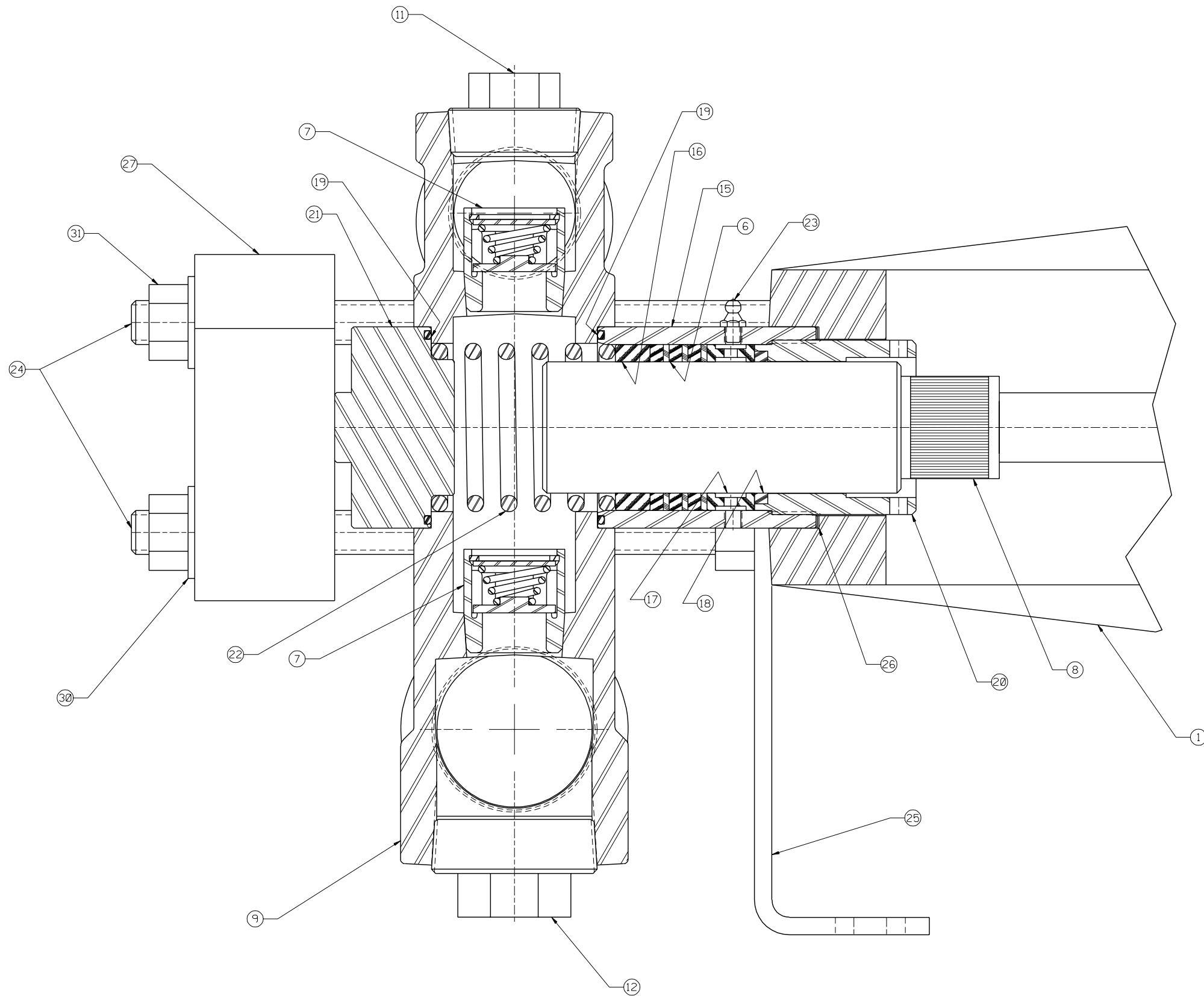


* THESE COMPONENTS ARE LOCATED IN THE FLUID CYLINDER GROUP, ITEM ②
 ** THESE COMPONENTS ARE LOCATED IN THE STUFFING BOX GROUP, ITEM ③
 *** THESE COMPONENTS ARE LOCATED IN THE ATTACHING GROUP, ITEM ④



ITEM	NO. RECD	PART NO.	PART NAME
①	1	5267664	POWER END ASSEMBLY:
②	1	5274494	FLUID CYLINDER GROUP:
③	3	3264122	STUFFING BOX GROUP:
④	1	5267679	ATTACHING GROUP:
⑤	1	5274547	CARTON/MANUAL GROUP:
⑥	3	5272409	PACKING SET: TEF/KEV
⑦	6	1256641	VALVE ASSEMBLY: DISC, 440 SST
⑧	3	5259342	PLUNGER: 1/4" DIA, CERAMIC
* ⑨	1	5260066	FLUID CYLINDER:
* ⑩	2	5260799	PIPE PLUG: 1" PIPE (NOT SHOWN)
* ⑪	3	5260800	PIPE PLUG: 1/4" PIPE
* ⑫	1	5260801	PIPE PLUG: 1/2" PIPE
* ⑬	2	1177201	CAPLUG: INT 14S, (NOT SHOWN)
* ⑭	2	1177203	CAPLUG: INT 20S, (NOT SHOWN)
** ⑮	3	5262080	STUFFING BOX:
** ⑯	3	5265161	THROAT BUSHING/FOLLOWER:
** ⑰	3	5273534	LANTERN RING:
** ⑱	3	5262101	WIPER RING:
** ⑲	6	320487	O-RING: 2 1/2" OD X 1/8" NOM., TEFLON
** ⑳	3	5273531	ADJUSTING NUT:
** ㉑	3	5260059	CYLINDER COVER:
** ㉒	3	5259641	PACKING SPRING:
** ㉓	3	1100759	LUBE FITTING: 1/8" NPT, STR
*** ㉔	6	5260065	STUD: 5/8"-11 UNC-2A, 10.63 LG
*** ㉕	1	5254219	FRONT FOOT:
*** ㉖	3	1280024	CYLINDER GASKET:
*** ㉗	3	5260055	CYLINDER COVER CLAMP:
*** ㉘	1	5267123	LIQUID LEVEL GAGE: (NOT SHOWN)
*** ㉙	2	5256759	STUD: 5/8"-11 UNC-2A, 7.69 LG (NOT SHOWN)
*** ㉚	8	5259620	WASHER: 5/8"
*** ㉛	10	5259621	NUT: 5/8"-11

NOTES:
 1 TORQUE FASTENERS PER FMC ENGR SPEC AS-22
 2 TEST PUMP PER FMC ENGR SPEC AS-15
 3 STAMP NAMEPLATE PER FMC ENGR SPEC AS-21
 4 PAINT PUMP PER FMC ENGR SPEC CP-20

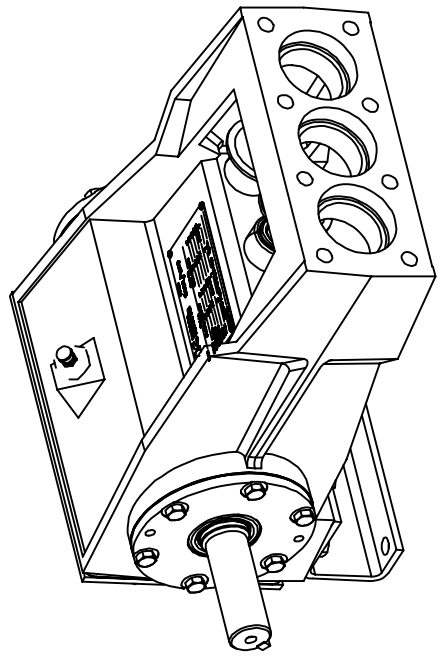
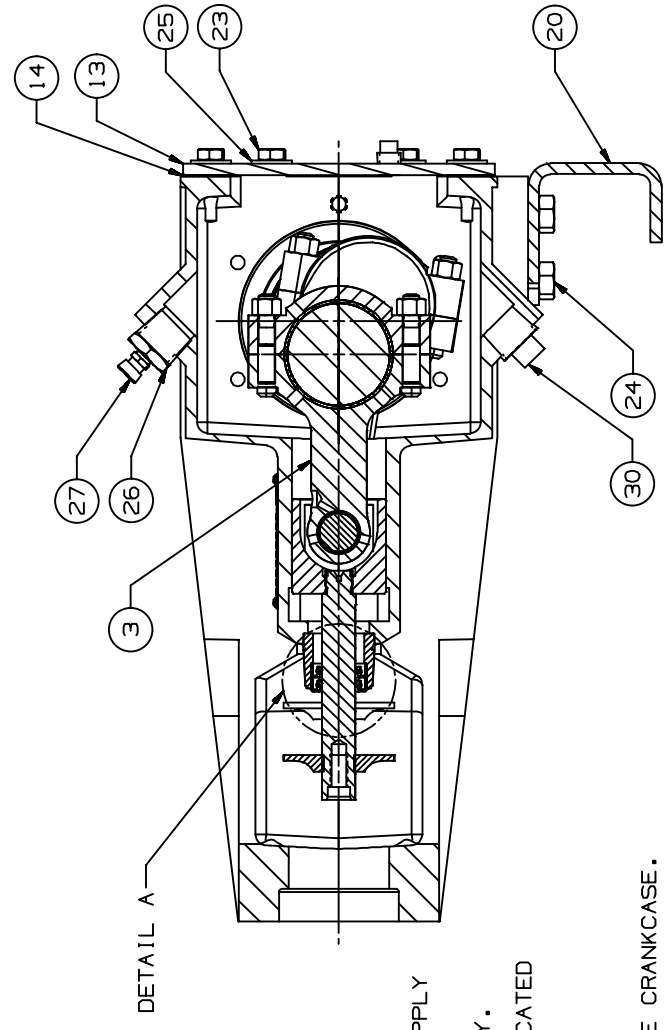
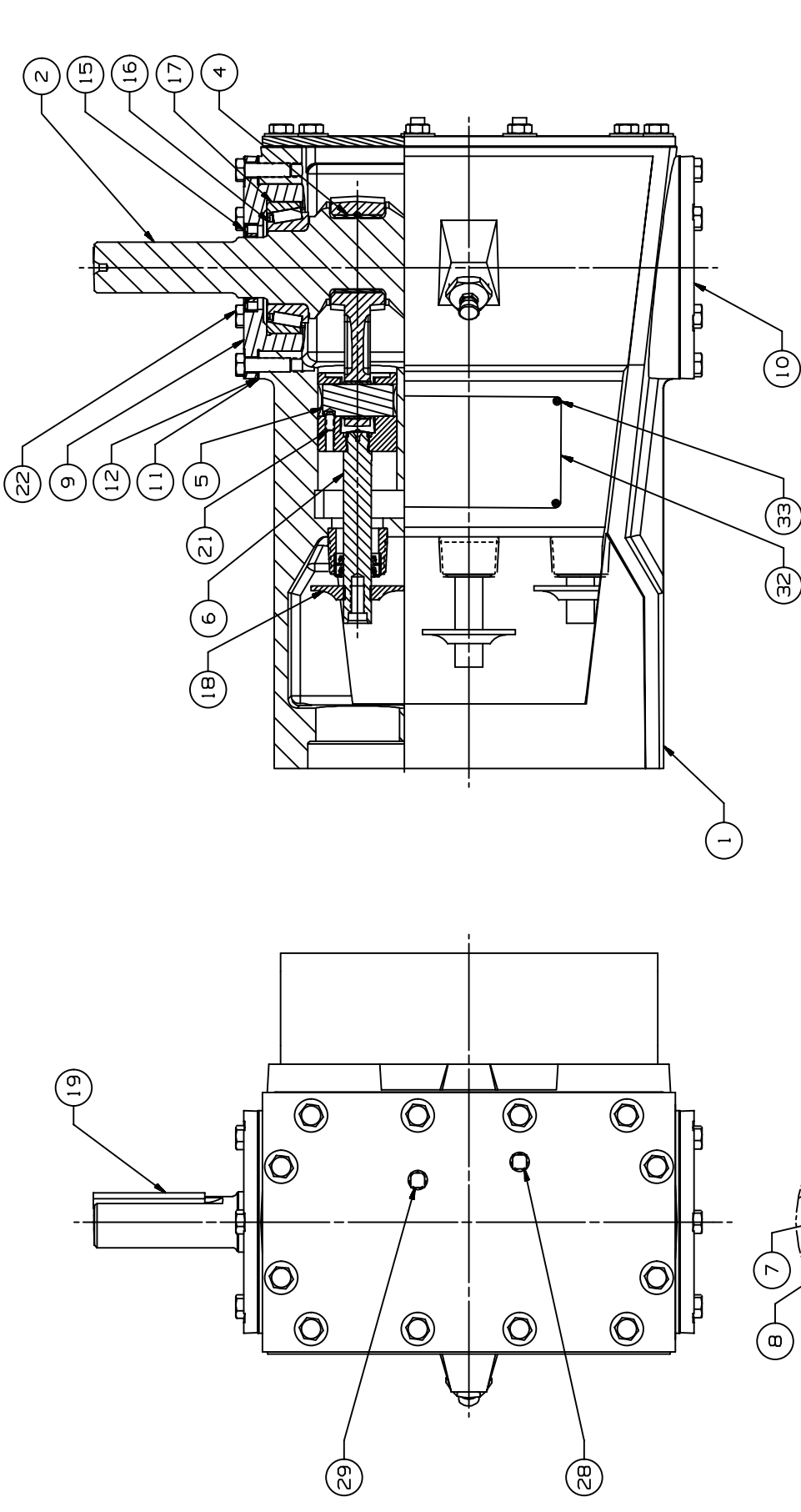
This drawing is the property of FMC Corporation and may not be used, reproduced, published, or disclosed to others without express authorization FMC Corp.		FMC Corporation Fluid Control Division 2825 W. Washington Box 1377 Stephenville, Texas 76481	
Unless Otherwise Specified: Remove all burrs & sharp corners .015 R. All diameters concentric unless otherwise noted. Angles ±1/2° .XX ±.015 .XXX ±.005 Finish 125 RMS All dimensions are in inches		PUMP ASSEMBLY M0610 DI, W/1 1/2" NPT X 1" NPT FLUID END, CERAMIC PLGR, TEF/KEV PACKING & 440 SST DSC VALVE ASSEMBLY	
REV	WAS	ECN	DATE
11199	08-03-95		
REV	WAS	ECN	DATE

B	REVISED ITEM 7	14110	SLF	01-25-96	RELEASED FOR PRODUCTION	DRAWN	CHJ	02-09-95	SCALE:	NONE
A	REVISED & REDRAWN	12129	CHJ	02-09-95	ECN	DATE	KCD.	WES	03-16-95	SIZE
							APPD.	RMc	03-17-95	D
										3264113

3264113

ITEM	NO. REQD	PART NO.	PART NAME
(1)	1	5267664	POWER END ASSEMBLY:
(2)	1	5274494	FLUID CYLINDER GROUP:
(3)	3	3264122	STUFFING BOX GROUP:
(4)	1	5267679	ATTACHING GROUP:
(5)	1	5274547	CARTON/MANUAL GROUP:
(6)	3	5272409	PACKING SET: TEF/KEV
(7)	6	1256641	VALVE ASSEMBLY: DISC, 440 SST
(8)	3	5259342	PLUNGER: 1¼" DIA, CERAMIC
(9)	1	5260066	FLUID CYLINDER:
(10)	2	5260799	PIPE PLUG: 1" PIPE (NOT SHOWN)
(11)	3	5260800	PIPE PLUG: 1¼" PIPE
(12)	1	5260801	PIPE PLUG: 1½" PIPE
(13)	2	1177201	CAPLUG: INT 14S, (NOT SHOWN)
(14)	2	1177203	CAPLUG: INT 20S, (NOT SHOWN)
(15)	3	5262080	STUFFING BOX:
(16)	3	5265161	THROAT BUSHING/FOLLOWER:
(17)	3	5273534	LANTERN RING:
(18)	3	5262101	WIPER RING:
(19)	6	320487	O-RING: 2½" OD X ⅛" NOM., TEFLON
(20)	3	5273531	ADJUSTING NUT:
(21)	3	5260059	CYLINDER COVER:
(22)	3	5259641	PACKING SPRING:
(23)	3	1100759	LUBE FITTING: ⅛" NPT, STR
(24)	6	5260065	STUD: ⅝-11 UNC-2A, 10.63 LG
(25)	1	5254219	FRONT FOOT:
(26)	3	1280024	CYLINDER GASKET:
(27)	3	5260055	CYLINDER COVER CLAMP:
(28)	1	5267123	LIQUID LEVEL GAGE: (NOT SHOWN)
(29)	2	5256759	STUD: ⅝-11 UNC-2A, 7.69 LG (NOT SHOWN)
(30)	8	5259620	WASHER: ⅝"
(31)	10	5259621	NUT: ⅝-11

ITEM	MODEL	DESCRIPTION	QTY
1	6700DU5002650	POWER FRAME:	1
2	6700DU5002651	CRANKSHAFT:	1
3	6700DU5009912	CONNECTING ROD:	3
4	6700DU5009959	ROD BEARING: HALF SHELL	6
5	6700DU5009956	WRIST PIN:	3
6	6700DU5009825	CROSS-HEAD ASSEMBLY:	3
7	6700DU5009958	SEAL HOLDER: PONY ROD SEAL	3
8	6700DU5010074	SEAL: PONY ROD	6
9	6700DU5002653	BEARING HOUSING: DRIVE SIDE	1
10	6700DU5002657	BEARING HOUSING: BLIND	1
11	6700DU5002683	GASKET: BEARING HOUSING	2
12	6700DU5009955	SHIM: BEARING HOUSING	6
13	6700DU5002655	BACK COVER:	1
14	6700DU5009942	GASKET: BACK COVER	1
15	6000DU5002686	OIL SEAL:	1
16	6700DU5009927	BEARING CONE:	2
17	6700DU5009928	BEARING CUP:	2
18	6700DU5004008	BARRIER WASHER:	3
19	6700DU5009931	KEY: 5/16 SQ X 3.00 LG	1
20	6700DU5002654	REAR FOOT:	1
21	6000DU5007877	SET SCREW: 1/4-20UNC-2A X .50 LG	3
22	6000DU5002690	HEX HEAD CAPSCREW: 3/8-16UNC-2A X 1.25 LG	12
23	6700DU5010061	HEX HEAD CAPSCREW: 3/8-16UNC X .75 LG, NYLOK	12
24	6000DU5002700	HEX HEAD CAPSCREW: 1/2-13UNC-2A X .75 LG	6
25	6000DU5009597	WASHER: BELLEVILLE, 3/8	12
26	6000DU5002691	BUSHING: HEX HEAD, 3/4 X 1/8	1
27	6000DU5002692	LUBE VENT: 1/8-27 PTF	1
28	6000DU5001777	PIPE PLUG: 1/4 NPT	1
29	6000DU5001777	PIPE PLUG: 1/4 NPT	1
30	6000DU5003442	PIPE PLUG: SQ HEAD, 3/4 NPT	1
31	6000DU5002699	PIPE PLUG: SQ HEAD, 1/8 NPT (N.S.)	1
32	6400DU5005333	NAMEPLATE	1
33	6000DU5004155	SELF TAPPING SCREW:	4



- ASSEMBLY NOTES:
- CONNECTING ROD SPLASH HOLE MUST BE FACING UPWARD.
 - WRIST PIN LOCK HOLE MUST ALIGN WITH SET SCREW. APPLY LOCTITE 271 TO SET SCREWS BEFORE ASSEMBLY.
 - LUBRICATE CRANKSHAFT OIL SEALS WITH LIGHT OIL ONLY.
 - ALL MOVING PARTS IN THE POWER END SHOULD BE LUBRICATED WITH SAE 30 WT OIL AT ASSEMBLY.
 - ASSEMBLE CRANKSHAFT IN POWER FRAME WITH TAPERED BEARINGS END PLAY OF .002 TIGHT TO .003 LOOSE.
 - INSTALL ROD SEALS WITH BOTH LIPS TURNED TOWARD THE CRANKCASE.
 - TORQUE FASTENERS PER FMC ENGR SPEC AS-22.
 - APPLY SILICON SEALER TO SEAL HOLDER (ITEM #7) BEFORE PRESSING INTO POWER FRAME.
 - ITEMS 28 AND 31 TO BE INSTALLED AFTER TESTING, AND BEFORE CLEANING AND PAINTING.

UNLESS OTHERWISE SPECIFIED	DESCRIPTION	POWER END ASSEMBLY: M06 LH	DATE	BY
DO NOT SCALE THIS DRAWING	POWER END ASSEMBLY: M06 LH		24-JUL-2003	STONEY, BRYAN T.
ALL DIMENSIONS ARE IN INCHES (MM)			29-JUL-2003	MERCK, TOM
BREAK SHARP EDGES .015 (1.28) MAXIMUM			05-AUG-2003	STONEY, BRYAN T.
INSIDE CORNER RADIUS .031 (1.762) MAXIMUM			05-AUG-2003	CHARLTON, FRED
THREADS CONFORM TO FEDERAL STANDARD H-28			05-AUG-2003	HEROLD, JOHN R.
TAPERED THREADS CONFORM TO APT 6A				
BOLT HOLES MUST STRADDLE COMMON CENTERLINE				
ALL DIMENSIONS ARE TO UNLESS OTHERWISE SPECIFIED				
WITHOUT FURTHER EXPRESSION BY THE DRAWING				

BILL OF MATERIAL
PART NUMBER: 5267664
POWER END ASSEMBLY; M06 LH

ITEM	PART NUMBER	DESCRIPTION	DWG NUMBER	UM	QTY	MATERIAL
1	5253742	POWER FRAME; M06, CAST IRON	6700DU5002650	EA	1	
2	5253744	CRANKSHAFT; M06, SINGLE EXTENDED, DUCTILE IRON	6700DU5002651	EA	1	
3	5262025	CONNECTING ROD; M06, W/ BRONZE BUSHING, DUCTILE IRON	6700DU5009912	EA	3	
4	P510430	ROD BEARING; HALF SHELL, M06, TRI-METAL	6700DU5009959	EA	6	
5	5262026	WRIST PIN; M06, ALLOY STEEL	6700DU5009956	EA	3	
6	5259573	CROSSHEAD ASSEMBLY; M06, CAST IRON	6700DU5009825	EA	3	
7	5254195	SEAL HOLDER; PONY ROD SEAL, M06, ALUMINUM	6700DU5009958	EA	3	
8	1283603	SEAL; PONY ROD F/M06/L06, .750 ROD DIA X 1.250 SEAL GROOVE DIA X .312 LG	6700DU5010074	EA	6	
9	5254176	BEARING HOUSING; M06, DRIVE SIDE, CAST IRON	6700DU5002653	EA	1	
10	5256653	BEARING HOUSING; M06, BLIND, CAST IRON	6700DU5002657	EA	1	
11	5254177	GASKET; BEARING HOUSING M06, .02 THICK, ZELBUNA-WG5	6700DU5002683	EA	2	
12	5254178	SHIM; BEARING HOUSING, M06, ARTUS PLASTIC .005 THICK BLUE	6700DU5009955	EA	6	
13	P505590	BACK COVER; M/L06, CARBON STEEL	6700DU5002655	EA	1	
14	5254217	GASKET; BACK COVER M06, .031 THICK, VELLUMOID #4	6700DU5009942	EA	1	
15	5257492	OIL SEAL; F/ROTATING MOTION 1.625 ID X 2.375 OD X .375 LG	6000DU5002686	EA	1	
16	320125	BEARING CONE; 1.9685 ID X 1.10 LG	6700DU5009927	EA	2	
17	320124	BEARING CUP; 3.5433 OD X .9055 LG	6700DU5009928	EA	2	
18	P512378	BARRIER WASHER: F/M06, .68 ID X 2.50 OD X .38 LG, 80 DURO BUNA-N	6700DU5004008	EA	3	
19	1187856	KEY; 5/16 SQUARE X 3.00 LG, CARBON STEEL	6700DU5009931	EA	1	M11803
20	P505621	REAR FOOT; M/L06, CARBON STEEL	6700DU5002654	EA	1	
21	1103444	SET SCREW; SOCKET HEAD, CUP POINT, 1/4-20UNC-2A X .50 LG, ALLOY STEEL	6000DU5007877	EA	3	
22	1100043	CAP SCREW, HEX HEAD, 3/8-16UNC-2A X 1.25 LONG, PER ASME B18.2.1, SAE J429 GRADE 5, ZINC	NO-DWG	EA	12	

23	320565	COATED CAPSCREW; HEX HEAD, 3/8-16UNC-2A X .75 LONG, NYLOK, GR5, ZINC	6700DU5010061	EA	12
24	1106980	COATED CAP SCREW, HEX HEAD, 1/2-13UNC-2A X .75 LONG, PER ASME B18.2.1, SAE J429 GRADE 5, ZINC	NO-DWG	EA	6
25	1177455	COATED WASHER; BELLEVILLE, 3/8, CARBON STEEL	6000DU5009597	EA	12
26	1106430	BUSHING; HEX HEAD, 3/4 X 1/8, CARBON STEEL, GALVANIZED	6000DU5002691	EA	1
27	1177536	LUBE VENT; 1/8-27 PTF	6000DU5002692	EA	1
28	3266522	PIPE PLUG SQUARE HEAD; 1/4 NPT, HIGH DENSITY POLYETHYLENE	6000DU5001777	EA	1
29	1105666	PIPE PLUG SQUARE HEAD; 1/4 NPT, CARBON STEEL, GALVANIZED	6000DU5001777	EA	1
30	1187037	PIPE PLUG; SQ HEAD, 3/4 NPT, MAGNETIC, CARBON STEEL	6000DU5003442	EA	1
31	3269460	PIPE PLUG; SQ HEAD, 1/8 NPT, HIGH DENSITY POLYETHYLENE	6000DU5002699	EA	1
32	5277980	NAMEPLATE; PLUNGER PUMP, MATL 18-8 STAINLESS STEEL, .036 TO .024 THICKNESS	6400DU5005333	EA	1
33	1187413	SCREW; #4-24 X 7/32 LG, TYPE AB, SLOTTED PAN HEAD SELF TAPPING, CARBON STEEL, NICKEL PLATED ***NO GRAPHICS***	6000DU5004155	EA	4