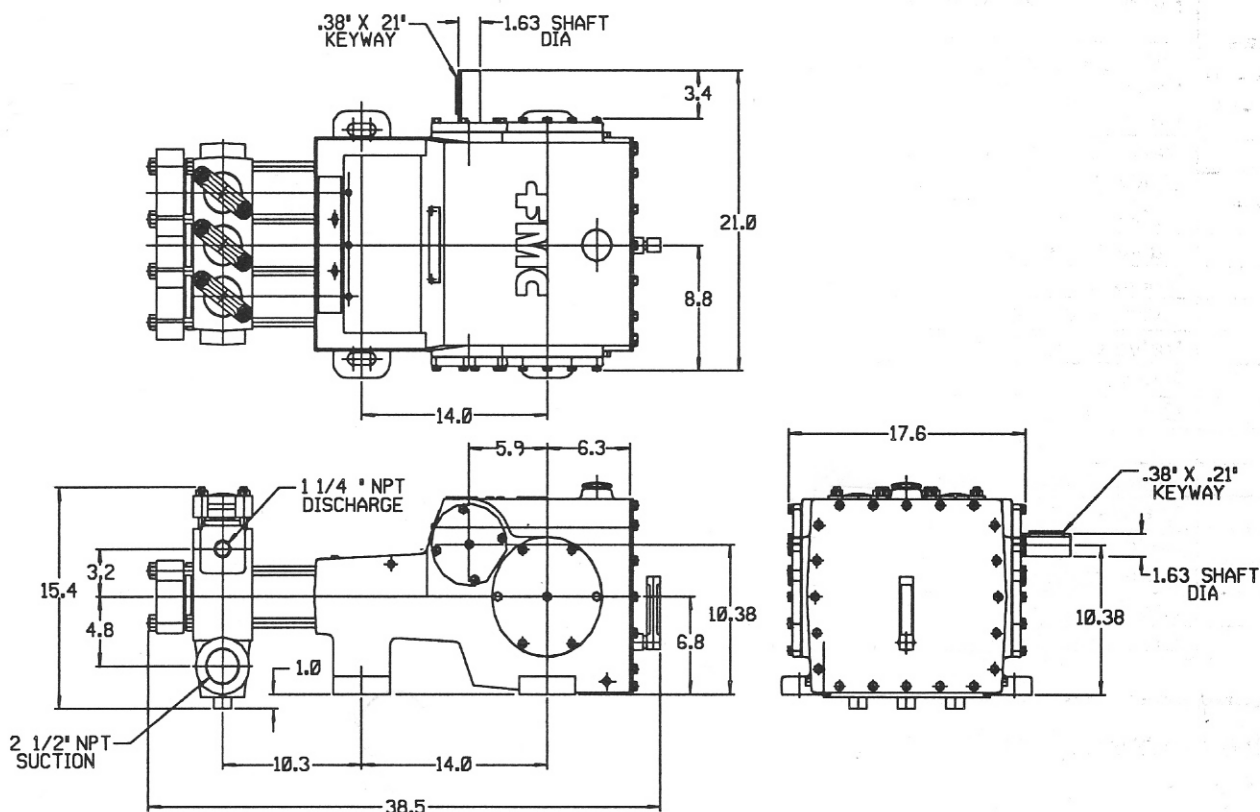


Pump data 105 BHP

Model L16 Piston Pump



Pump type: Triplex piston

Drive-end specifications

Stroke 4"
 Internal Gear Reduction Ratio - 3.94:1
 Oil Type - SAE 80W90
 Direction of Rotation - Top of input shaft away from fluid end
 Shipping Weight - 705 lbs

Maximum Speed - SEE BACK
 Minimum Speed - SEE BACK
 No. of Pistons - 3
 Crankcase Material - Cast Iron
 Oil Capacity - 10 qts
 Shaft Extension - LH Standard
 RH shaft optional

L16 TRIPLEX POWER PUMP

4", (101.6 mm) STROKE 7850 LB. (34900N) FRAME (ROD) LOAD

	Piston Diameter		Displacement		Maximum Discharge Pressure		Standard Valve Data			Cylinder Connections	
	INCH	MM	GAL/REV	L/REV	PSIG	BAR	DISC DIAMETER	SEAT HOLE AREA	% AREA	SUCTION	DISCHARGE
1616	2.00	50.80	.0414	.157	2500	172.4	1.45"	1.21 IN ²	38	2-1/2"	1-1/4"
1618	2.25	57.17	.0525	.199	2000	137.9	(36.8mm)	(779mm ²)	30	NPT	NPT

Pump output is equal to "Input Shaft Speed Times Displacement".
 Refer to Product Safety Bulletin, Installation, Operations, and Maintenance manuals for product safety information.

