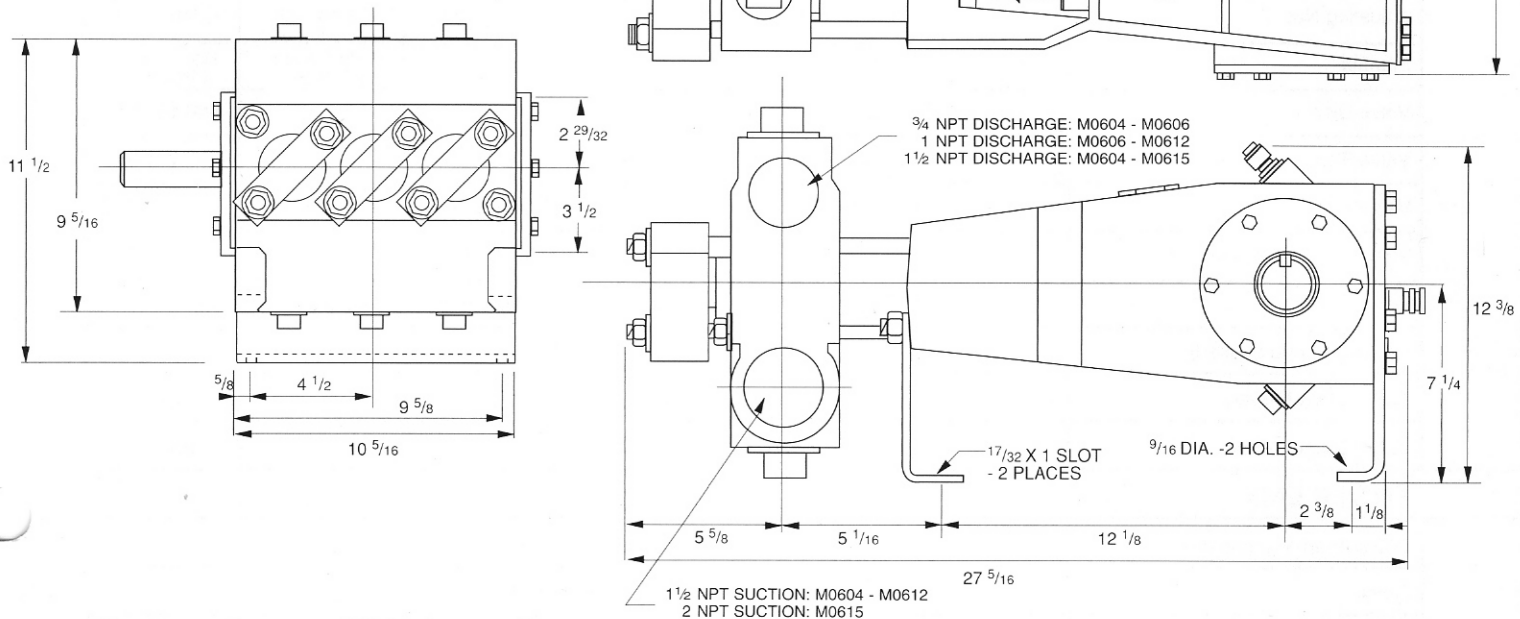


Pump data 20.7 BHP

Model M06

Plunger Pump



Pump type: Triplex plunger

NOTE: Drawing Shown for Cast Fluid End

Drive-end specifications

Stroke — 1 1/2"
 Oil type — SAE 30
 Direction of Rotation — Top of Shaft Toward Head
 Shaft Extension — R.H and Double Extended (opt.)
 Shipping Weight — 245 lbs.

Maximum Speed — 600 RPM
 Minimum Speed — 100 RPM
 No. of Plungers — 3
 Crankcase Material — Cast Iron
 Oil Capacity — 2 Quarts

M06 TRIPLEX POWER PUMP

1 1/2", (38.1 mm) STROKE 2700 lb. (12000N) FRAME (PLUNGER) LOAD

		PLUNGER DIAMETER		Displacement		Maximum Discharge Pressure		STD VALVE DATA			CYLINDER CONNECTIONS		
		INCH	MM	GAL/REV	L/REV	PSIG	BAR	DISC. DIAMETER	SEAT HOLE AREA	% AREA	SUCTION	DISCHARGE	
A	604	.50	12.1	.00382	.014	10000	690	97" (24.6 mm)	.307 IN ² (198 mm ²)	156	1 1/2"	3/4"	
	605	.625	15.9	.00598	.023	8800	607						100
	606	.75	19.0	.00861	.033	6100	421						69
B	606	.75	19.0	.00861	.033	5000	345	97" (24.6 mm)	.307 IN ² (198 mm ²)	69	1 1/2"	1"	
	608	1.00	25.4	.0153	.058	3400	234						39
C	610	1.25	31.8	.0239	.090	2200	152	97" (24.6 mm)	.442 IN ² (285 mm ²)	36	1 1/2"	1"	
	612	1.50	38.1	.0344	.13	1500	103						25
D	615	1.875	47.6	.0538	.20	1000	69	1.140" (29.0 mm)	.69 IN ² (445 mm ²)	25	2"	1 1/2"	

M06 TRIPLEX POWER PUMP

STANDARD MATERIAL OF CONSTRUCTION (CAST FLUID END MODELS)

REF#	DESCRIPTION	MATERIAL					
		DI	DI/AI	AB	SS	API	HP
	Fluid Cylinder (Valve Chamber)	A536 GR 80-55-06 Ductile Iron		CDA 958 Ni-Alum Bronze	316 Stn Stl	Wrought Carbon Steel	
	Stuffing Box	303 Stainless Steel		*CDA 954 Alum Bronze	316 Stn Stl	Carbon Stl	416 Stn Stl
	Throat Ring	C360 Brass	Glass Filled PPS	CDA 954 Alum Bronze	Glass Filled PPS	Glass Filled PPS	C360 Brass
	Lantern Gland	C360 Brass	Carbon Steel	CDA 954 Alum Bronze	316 Stn Stl	Carbon Stl	C360 Brass
	Adjusting Nut	C360 Brass	Carbon Steel	CDA 954 Alum Bronze	316 Stn Stl	Carbon Stl	C360 Brass
	Plunger	Solid Ceramic w/Stainless Steel Quill or Hard Faced Stainless Steel				Hard Faced 1018 Stl	Hard Faced 416 Stn Stl
	Valve Disc	440 Stn Stl		450 (15-6 Mo) Stn Stl			440 Stn Stl
	Valve Seat	440 Stn Stl		450 (15-6 Mo) Stn Stl			440 Stn Stl
	Valve Spring	17-7 Ph Stn Stl		MP35N Ni-Co Alloy			17-7 Ph Stn Stl
	Valve Spring Retainer	416 Stn Stl		450 (15-6 Mo) Stn Stl			416 Stn Stl
	Valve Cover	Carbon Steel		Red Brass	316 Stn Stl	Carbon Stl	Carbon Steel
	Packing Spring (if used)	17-7 Ph Stainless Steel					17-7 Ph Stn Stl
	Stuffing Box O-Ring	Teflon					Teflon
	Valve Cover O-Ring	Teflon					Teflon
POWER END							
	Power Frame (pump case)	A48 Class 30 Cast Iron					
	Crank	A536 GR 100-70-03 Ductile Iron					
	Main Bearings	Steel-Tapered Roller Type					
	Connecting Rod	A536 GR 80-55-06 Ductile Iron					
	Crosshead	A48 Class 30 Cast Iron					
	Crosshead Extension (pony rod)	416 Stainless Steel					

* Reverse Osmosis version utilizes 316 Stainless Steel Stuffing Boxes

Horsepower

M0604 requires 14.9 HP @ 1000 PSI; 2.3 GPM

M0605 requires 20.5 HP @ 8800 PSI; 3.6 GPM

M0606 requires 20.4 HP @ 6100 PSI; 5.2 GPM

M0606 requires 16.7 HP @ 5000 PSI; 5.2 GPM

M0608 requires 20.2 HP @ 3400 PSI; 9.2 GPM

M0610 requires 20.5 HP @ 2200 PSI; 14.3 GPM

M0612 requires 20.1 HP @ 1500 PSI; 20.7 GPM

M0615 requires 20.9 HP @ 1000 PSI; 32.3 GPM

Brake Horsepower Required for Specific Applications

$$= \frac{(\text{GPM}) (\text{PSI})}{1543} \quad \text{or} \quad \frac{(\text{BPD}) (\text{PSI})}{52903}$$

Technical Notes

1. Volumes indicated are based on 100% Volumetric Efficiency.
2. Horsepower required based on 90% Mechanical Efficiency.
3. Ratings are nominal speeds and pressures and may vary on FMC written approval.

FMC Corporation Fluid Control Division. P.O. Box 1377, Stephenville, Texas 76401, Phone: 817/968-2181, Fax: 817/968-5709