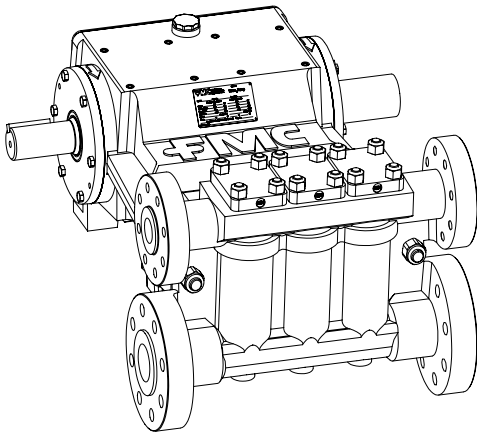


Model M12-Cast Fluid Cylinder

62 BHP Continuous Duty Rated (77 BHP Intermittent)



Specifications

Pump Model.....	M12
Design Standard.....	API-674, Second Edition
Configuration.....	Horizontal Triplex Plunger
Stroke Length.....	3.0 Inches
Frame Load Rating.....	6,000 lbs
Pump Weight.....	950 lbs
Intermittent Duty Speed Rating.....	500RPM
Continuous Duty Speed Rating.....	400 RPM
API-674 Max. Recommended Speed.....	400RPM
Minimum Speed.....	100 RPM*
Mechanical Efficiency.....	90%
Lubrication System (Standard).....	Splash, Gravity Return
Lubrication System (Optional).....	Pressurized, Motor Driven
Oil Capacity.....	3 Gallons
Maximum Fluid Temperature.....	200°F (300°F Capability)
Minimum Fluid Temperature.....	-20°F (-50°F Capability)

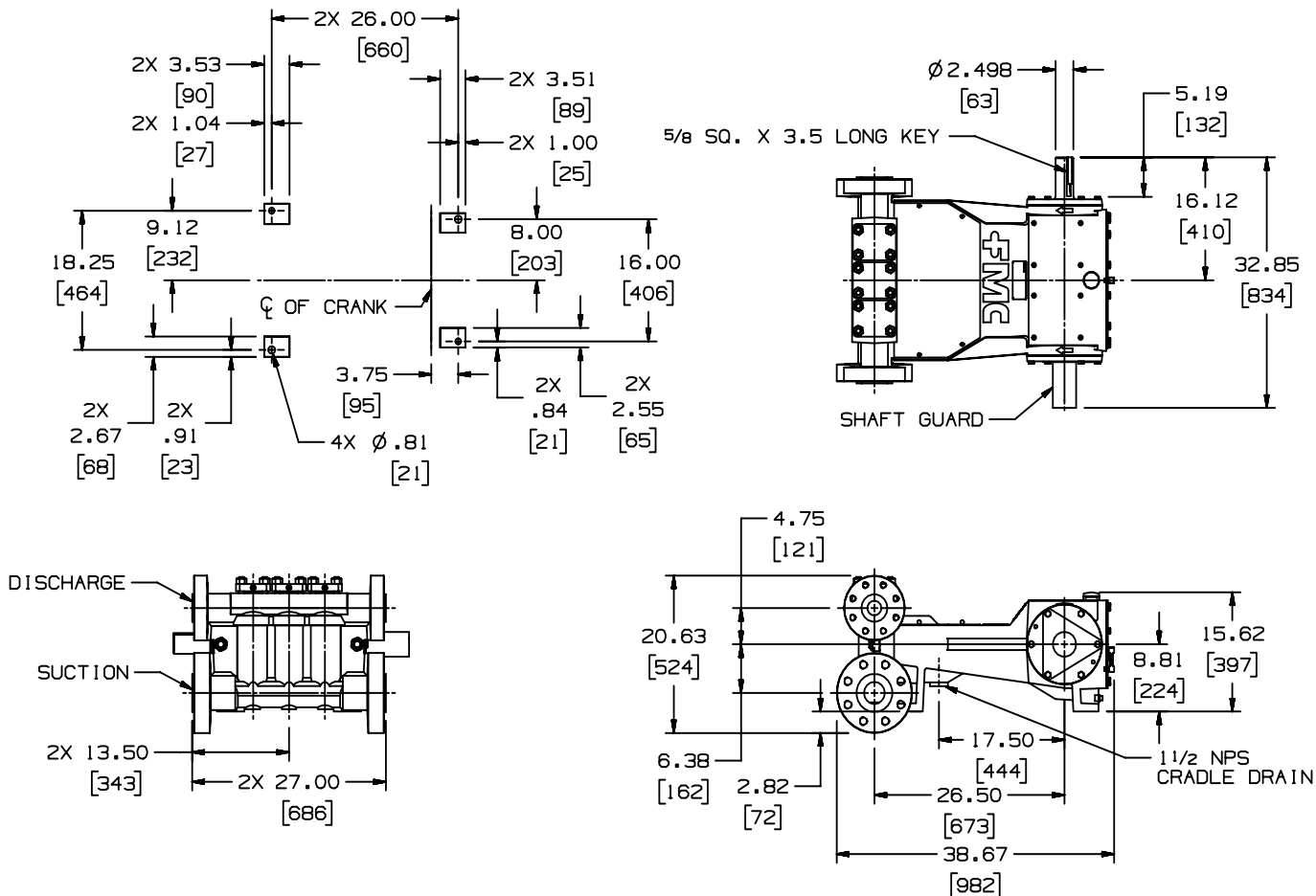
Standard Fluid End Materials Available:

- Ductile Iron[†]
- Carbon Steel
- Stainless Steel
- Nickel Aluminum Bronze[†]
- Other alloys per request*

Pump Model	Plunger Diameter (IN)	Displacement (GAL/REV)	Maximum Pressure (PSI)	Pump Capacity (GPM) @ Input Speed (RPM)								
				100 RPM	150 RPM	200 RPM	250 RPM	300 RPM	350 RPM	400 RPM	450 RPM	500 RPM
M1212	1.500	.0688	3,000	6.9	10.3	13.8	17.2	20.6	24.1	27.5	31.0	34.4
M1214	1.750	.0937	2,500	9.4	14.1	18.7	23.4	28.1	32.8	37.5	42.2	46.9
M1216	2.000	.1224	1,900	12.2	18.4	24.5	30.6	36.7	42.8	49.0	55.1	61.2
M1218	2.250	.1549	1,500	15.5	23.2	31.0	38.7	46.5	54.2	62.0	69.7	77.5
M1220	2.500	.1912	1,250	19.1	28.7	38.2	47.8	57.4	66.9	76.5	86.0	95.6
M1222	2.750	.2314	1,000	23.1	34.7	46.3	57.9	69.4	81.0	92.6	104.1	115.7
M1224	3.000	.2754	850	27.5	41.3	55.1	68.9	82.6	96.4	110.2	123.9	137.7

*Slower RPM can be achieved with the addition of a pressurized lubrication system

[†] Ductile Iron and Nickel Aluminum Bronze pumps will have NPT Connections



Standard Flange Sizes		
Pump Model	Discharge (in)	Suction (in)
M1212-M1218	1.5	3.0
M1220-M1224	2.0	3.0

Headquarters
 FMC Fluid Control
 Pump Products
 1803 Gears Road
 Houston, TX 77067
 Phone: 1-800-772-8582
 Phone: 281-260-2121
 Fax: 281-260-2122

Customer Service & Manufacturing
 FMC Fluid Control
 Pump Products
 2825 W. Washington Avenue
 Stephenville, TX 76401
 Phone: 254-968-2181
 Fax: 254-965-8278
 Toll Free: 1-800-772-8582

Notes

1. Consult FMC for specific exceptions to API-674 and NACE standards.
2. Consult FMC for any application where inlet pressures will exceed 10% of rated discharge pressure.
3. Horsepower based on 90% mechanical efficiency. Actual application horsepower requirements can be calculated using the equation:

$$BHP = (GPM \times PSI) \div 1543$$
4. Pump capacities shown are based on 100% volumetric efficiency.
5. Dimensions shown are for general sizing purposes and should not be used for construction.
6. FMC reserves the right to modify this information without prior notice.