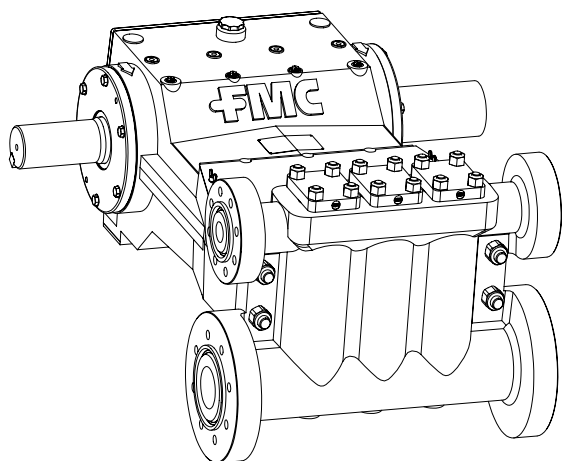


# Model M14-Cast Fluid Cylinder

88 BHP Continuous Duty Rated (104 BHP Intermittent)



## Specifications

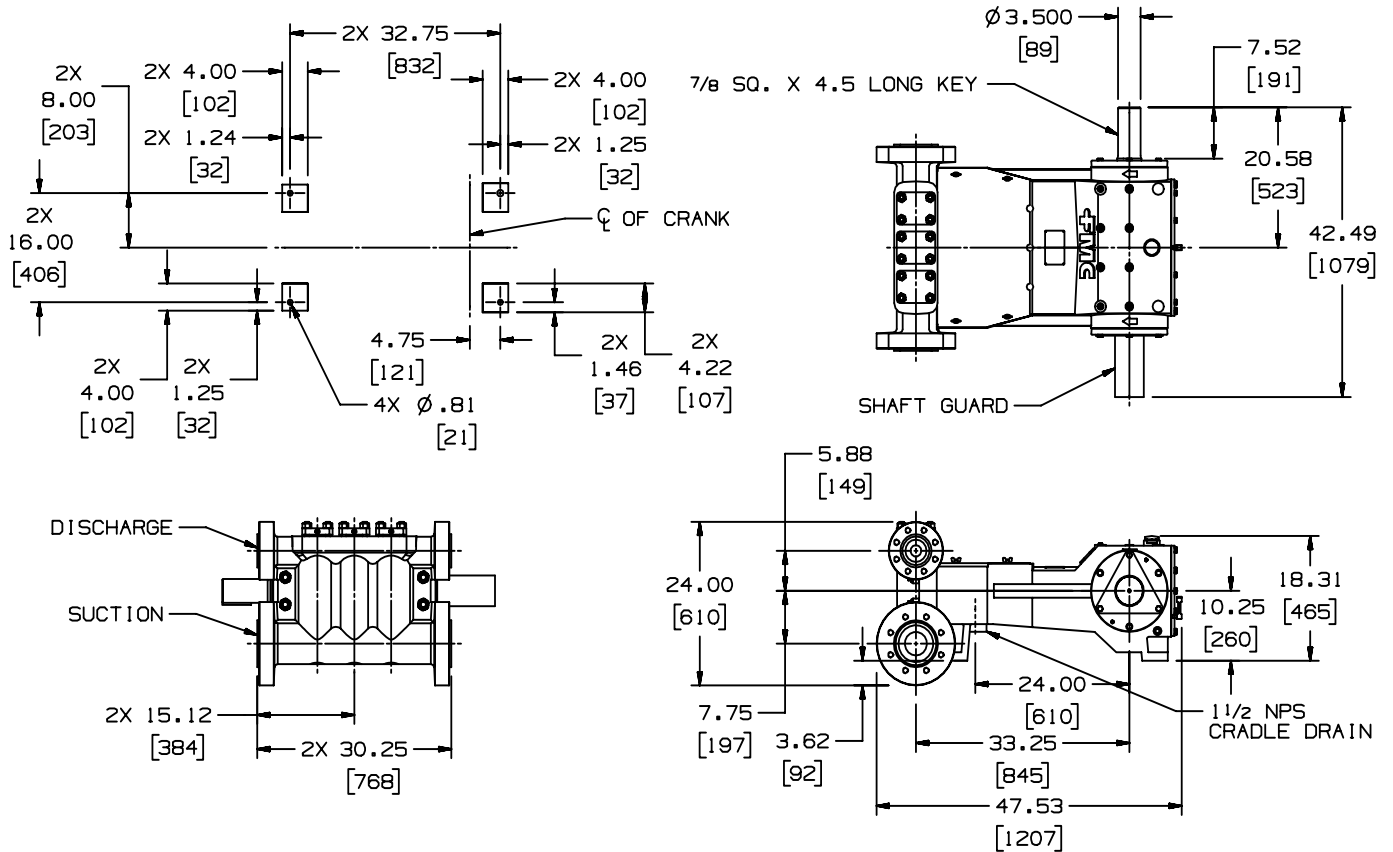
Pump Model.....	M14
Design Standard.....	API-674, Second Edition
Configuration.....	Horizontal Triplex Plunger
Stroke Length.....	3.5 Inches
Frame Load Rating.....	8,000 lbs
Pump Weight.....	1,800 lbs
Intermittent Duty Speed Rating.....	425 RPM
Continuous Duty Speed Rating.....	375 RPM
API-674 Max. Recommended Speed.....	375 RPM
Minimum Speed.....	100 RPM*
Mechanical Efficiency.....	10 Gallon
Maximum Fluid Temperature.....	200°F (300°F Capability)
Minimum Fluid Temperature.....	-20°F (-50°F Capability)

### Standard Fluid End Materials Available:

- Ductile Iron
- Carbon Steel
- Stainless Steel
- Nickel Aluminum Bronze
- Other alloys per request*

Pump Model	Plunger Diameter (IN)	Displacement (GAL/REV)	Maximum Pressure (PSI)	Pump Capacity (GPM) @ Input Speed (RPM)						
				100 RPM	150 RPM	200 RPM	250 RPM	300 RPM	375 RPM	425 RPM
M1414	1.750	.1093	3,000	10.9	16.4	21.9	27.3	32.8	<b>41.0</b>	46.5
M1416	2.000	.1428	2,500	14.3	21.4	28.6	35.7	42.8	<b>53.6</b>	60.7
M1418	2.250	.1807	2,000	18.1	27.1	36.1	45.2	54.2	<b>67.8</b>	76.8
M1420	2.500	.2231	1,600	22.3	33.5	44.6	55.8	66.9	<b>83.7</b>	94.8
M1422	2.750	.2700	1,350	27.0	40.5	54.0	67.5	81.0	<b>101.3</b>	114.8
M1424	3.000	.3213	1,150	32.1	48.2	64.3	80.3	96.4	<b>120.5</b>	136.6
M1426	3.250	.3771	1,000	37.7	56.6	75.4	94.3	113.1	<b>141.4</b>	160.3
M1428	3.500	.4373	825	43.7	65.6	87.5	109.3	131.2	<b>164.0</b>	185.9
M1430	3.750	.5020	725	50.2	75.3	100.4	125.5	150.6	<b>188.3</b>	213.4

\*Slower RPM can be achieved with the addition of a pressurized lubrication system



**Standard Flange Sizes**

Pump Model	Discharge (in)	Suction (in)
M1414-M1426	2.0	3.0
M1428-M1430	2.0	4.0

Headquarters  
FMC Fluid Control  
Pump Products  
1803 Gears Road  
Houston, TX 77067  
Phone: 1-800-772-8582  
Phone: 281-260-2121  
Fax: 281-260-2122

Customer Service & Manufacturing  
FMC Fluid Control  
Pump Products  
2825 W. Washington Avenue  
Stephenville, TX 76401  
Phone: 254-968-2181  
Fax: 254-965-8278  
Toll Free: 1-800-772-8582

**Notes**

1. Consult FMC for specific exceptions to API-674 and NACE standards.
2. Consult FMC for any application where inlet pressures will exceed 10% of rated discharge pressure.
3. Horsepower based on 90% mechanical efficiency. Actual application horsepower requirements can be calculated using the equation:  
$$\text{BHP} = (\text{GPM} \times \text{PSI}) \div 1543$$
4. Pump capacities shown are based on 100% volumetric efficiency.
5. Dimensions shown are for general sizing purposes and should not be used for construction.
6. FMC reserves the right to modify this information without prior notice.

**fmc pumps.com**